



Portfolio



May Khin

INTERIOR DESIGNER **Renovation & Refurbishment, FF&E Design, RIBA Stages 0-7**

Interior Architecture graduate with over **five years of practices** in residential and retail design.

Skilled in FF&E, material selection, and spatial composition, with a strong interest in interior styling and home staging. Brings hands-on experience in design development, furniture detailing, and installation support, with a keen eye for aesthetics and detail. Motivated to gain practical experience, contribute to real projects, and develop professionally within a collaborative design environment.

Seeking an entry-level role in interior design in the UK, where I can contribute my creativity and develop practical industry practice.

Curriculum Vitae - CV

» **Portsmouth, UK**
(Willing to Relocate)
» 07523220590

» may@maykhindesign.uk
» maykhindesign.uk
» www.linkedin.com/in/kmaykhin

Software Skills

- » Autocad
- » Sketchup
- » Revit
- » Lumion
- » Twinmotion
- » Adobe
- » Procreate

Technical Skills

- » Material, Colour & Finish Selection
- » Spatial Planning & 3D Visualisation
- » Design Development & Technical Drawing
- » Strong Presentation & Communication Skills
- » Hand Sketching & Concept Development
- » Construction and interior detail drawings
- » Drawing coordination and revision management

Core Strength

- » Concept Design & Mood Boards
- » Presentation Graphics
- » FF&E Specification & Scheduling
- » BIM-Assisted Design Coordination

Experience

Freelance Architectural Designer, Independent Practice » Remote - 2025 to Present

Leading the design of a three-storey residential apartment project currently at **RIBA Stage 4 (Technical Design)**. Managing design development, construction coordination, and adherence to a £63,000 project budget.

- » Developing spatial layouts and translating conceptual ideas and client requirements into clear design solutions that respond to structural and construction constraints.
- » Coordinating with two contractors and the Yangon City Development Committee (YCDC) during the construction phase to resolve technical details and maintain design intent on site.
- » Led the design of a three-storey residential apartment within a 65 m² site area.

Interior Designer, Yours Design Firm » Myanmar - 2019 to 2023

Interior Design (Residential & Office Projects)

- » Assisted in concept development, sketching, and spatial planning across **RIBA Plan of Work Stages 0-7**, responding to client briefs and site constraints.
- » Produced **2D technical documentation** including plans, sections, elevations, and joinery details for construction purposes.
- » **Reviewed and revised structural and electrical drawings**, including beam and column layouts, to ensure coordination with architectural plans.
- » Supported material selection, finishes specification, and lighting design to achieve cohesive interiors aligned with budget and brand identity.
- » Liaised with contractors and suppliers to ensure accurate fabrication, installation, and resolution of site issues.

Geriatric & Continuing Care Centre - GCC Centre - Thanlyin Township, Yangon - 2022

- » Assisted in design development for a temporary elderly care facility accommodating 77 residents.
- » Contributed to spatial planning focused on accessibility, safety, comfort, and ease of movement.
- » Supported preparation of architectural and interior drawings including plans, sections, and elevations.
- » Produced presentation drawings and visual materials for client and stakeholder review

Retail Interior (Cosmetic Shop) - Pakokku, Myanmar - 2020

- » Supported concept development and layout planning for a 418 m² cosmetic retail interior project.
- » Assisted in spatial planning to optimise product display, customer circulation, and staff workflow.
- » Contributed to the selection of materials, finishes, colours, and lighting in line with the brand identity and retail atmosphere.
- » Supported the preparation of detailed architectural drawings, including plans, elevations, and joinery details.
- » Reviewed and revised structural and electrical drawings.

Sustainable Living Project (Bamboo Housing) - Thanlyin, Myanmar - 2019

- » Assisted in the design of a bamboo-based living space for a Buddhist monk
- » Focused on sustainability and minimal living.
- » Conducted material research on bamboo and its application in interior and structural elements.
- » Supported material selection and detailing suitable for environmental and cultural context.
- » Collaborated with senior architects during design development and review stages.

Furniture Design (Residential, Office & Café Projects)

- » Designed custom furniture responding to spatial constraints, user needs, and overall design intent.
- » Produced 20+ detailed furniture drawings including dimensions, materials, and construction details.
- » Developed 3D models and visual renderings to clearly communicate design proposals.
- » Coordinated with fabricators and contractors to support accurate production and installation.

Additional Experience

Light Installation Artist » St Mary's Light Festival, Portsmouth - 2024

- » Designed and delivered an undersea-themed lighting installation, featuring illuminated jellyfish forms and a large octopus, as part of a three-member team from the University of Portsmouth.
- » Analysed site conditions, spatial layout, and visitor circulation to inform lighting placement and visual impact.
- » Produced visual studies, layout drawings, and lighting sketches to clearly communicate design intent.
- » Coordinated installation requirements within a public event setting, ensuring safe, effective, and timely setup.

Transferable Experience

Bakery Team Member » Cornish Bakery, Portsmouth - 2026 to present

- » Customer Service / Hospitality Experience
- » Worked in fast-paced, team-based environments requiring strong communication and organisation
- » Developed client-facing skills, understanding user needs and expectations
- » Managed multiple tasks efficiently during peak hours while maintaining attention to detail

Educational Background

- » **Master of Interior Architecture and Design**
University of Portsmouth - 2025
Thesis - Fantasy School Set for Burmese Alchemist
Focus on spatial storytelling, and atmosphere
- » **Bachelor of Architecture**
West Yangon Technological University - 2018
Thesis - Business Tower
Focus on Retail, Hotel, and Offices
- » **Bachelor of Technology (Architecture)**
West Yangon Technological University - 2016

Academic Achievement

- » Master of Interior Architecture and Design - **Distinction**
- » Bachelor of Architecture - **Distinction**
- » 2018 **Honorable Award** in Project Show & Competition
- » 2017 **Best Design Creation Award** (International Airport)

Certificate

- » **Historic Decorative Finisher Training Workshop - 2019**
UK Master Decorator and Gilder Paul Humphreys of Hare & Humphreys
Tourist Burma Building, Yangon, Myanmar

CONTENT

01
Serenity Arc
Bedroom



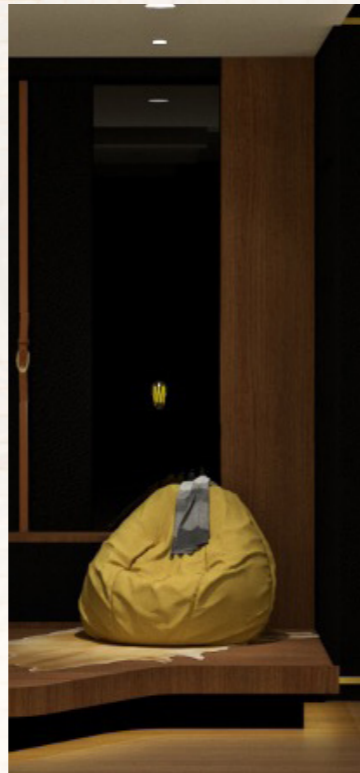
page 1

02
Futuristic
Bedroom



page 4

03
Contemporary
Double Bedroom



page 9

04
Yin Yin Private
Residence



page 12

05
3-Storey
Residential Design



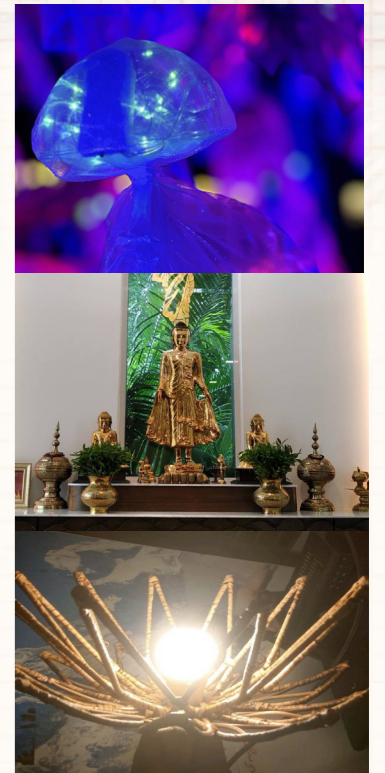
page 24

06
Fantasy School Set For
Burmese Alchemists



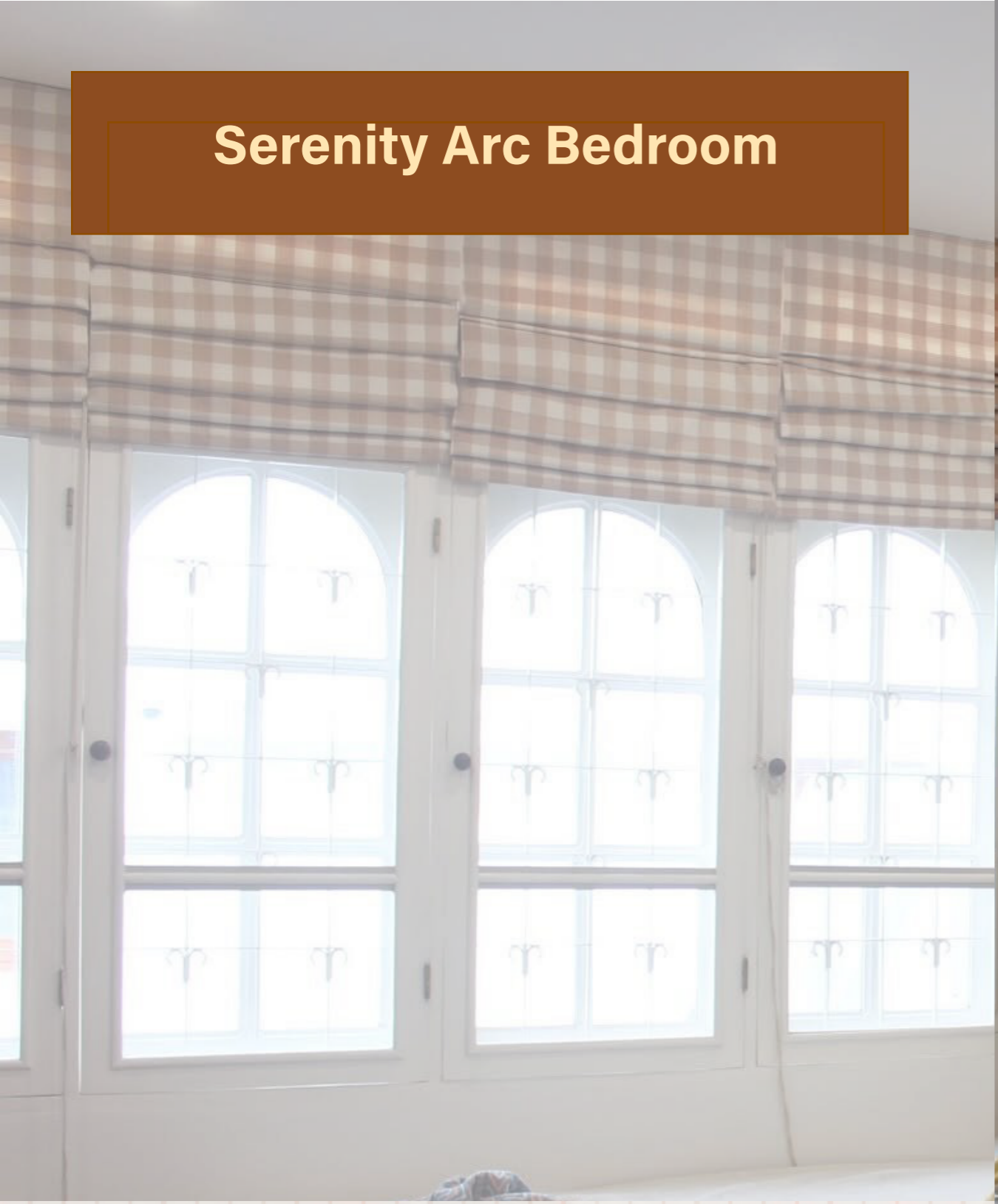
page 27

07
Creative
Artworks



page 36

Serenity Arc Bedroom



Best Residential Design Award (Single Family House)
Awarded by Design in Myanmar

Type	- Bedroom Interior
Site Location	- 29K Residence, Yangon, Myanmar
Area	- 11.9025 m ²
Role	- Interior Designer
Programs Used	- Sketchup, AutoCad, Vray
RIBA Stage 7	- In Use

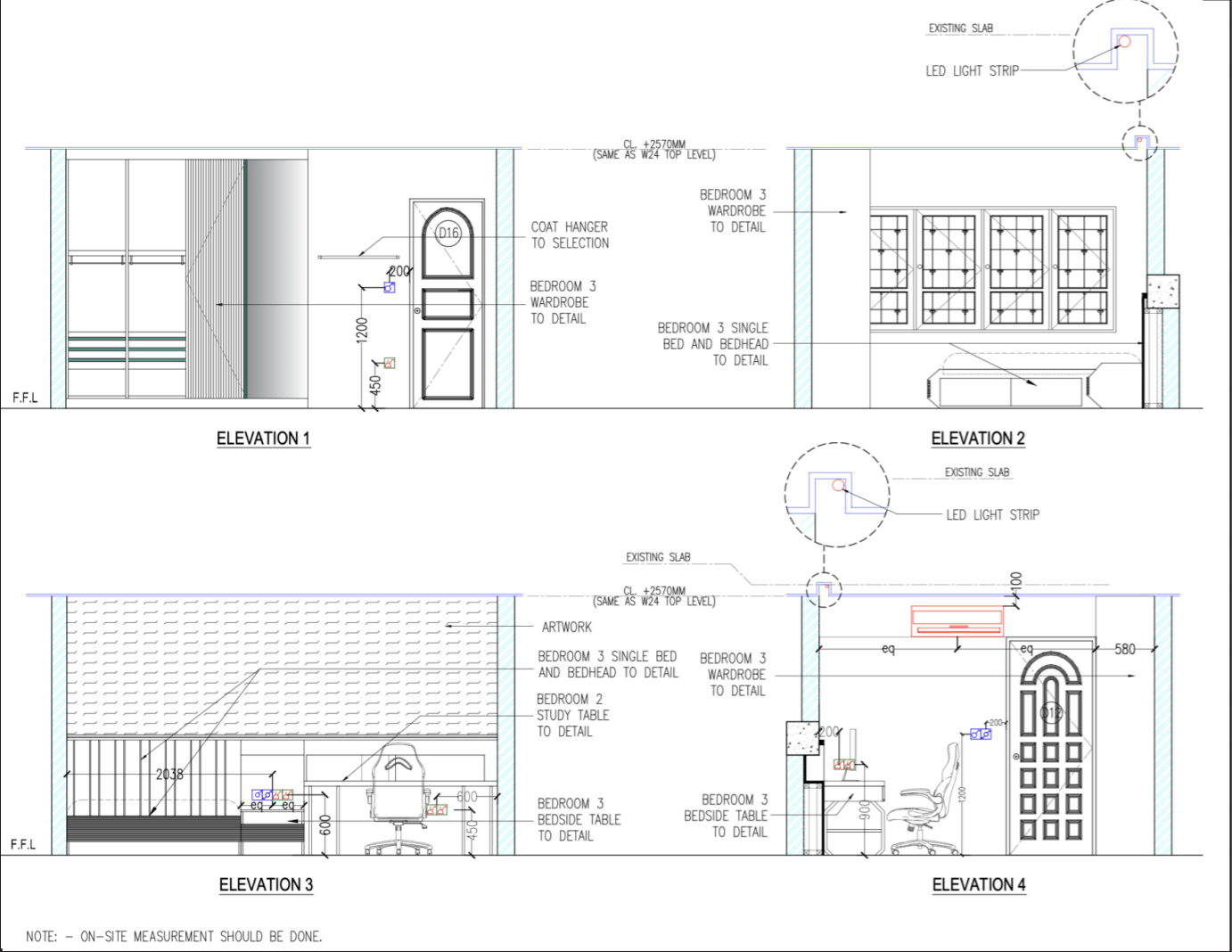
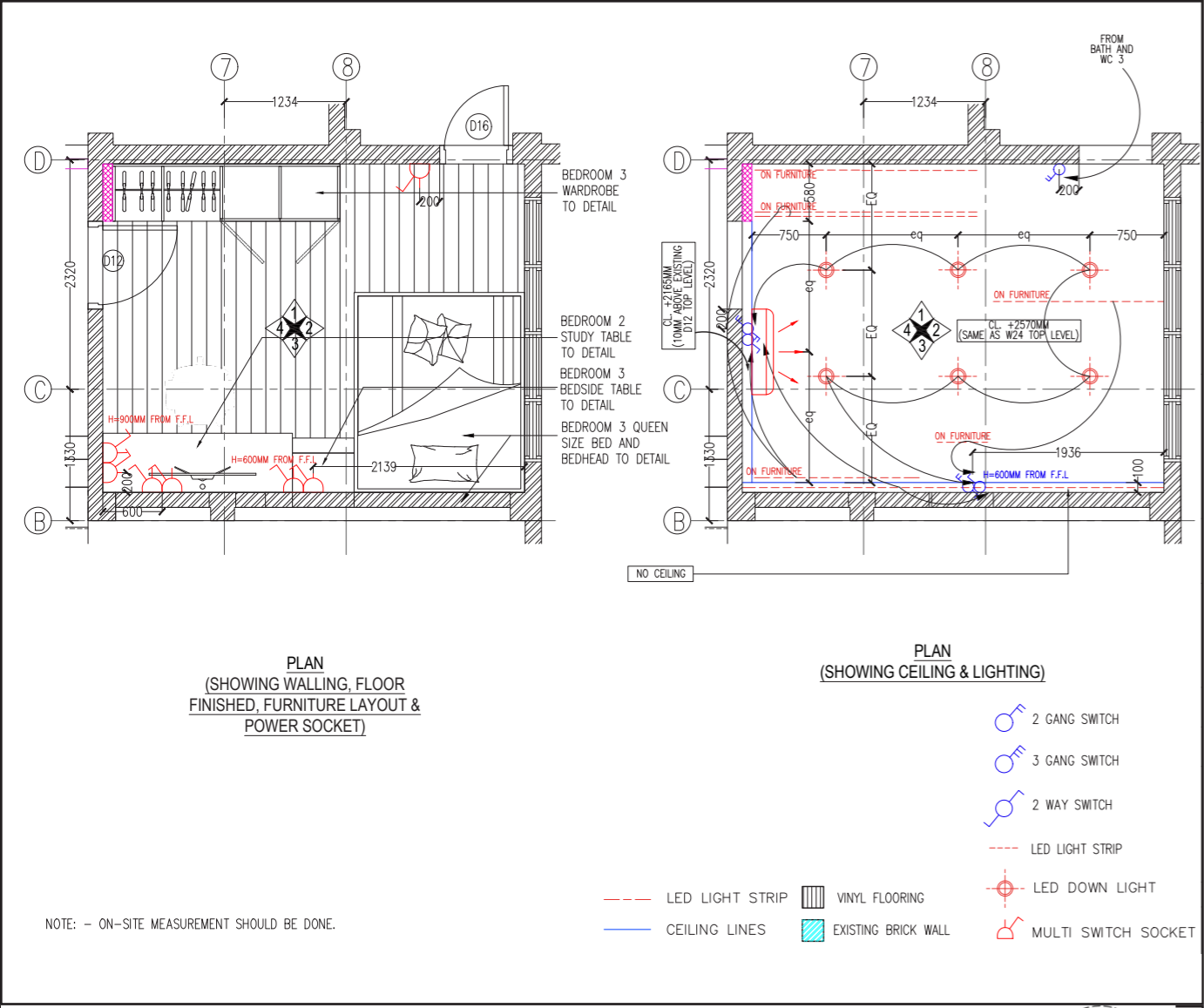


Concept

The design objective was to create a spatial composition that integrates multiple functions without visual clutter. This was achieved through **hexagonal joinery** that wraps the bed and bedside storage. Vertical timber panel visually expands the room while maintaining coherence between zones.

Natural wood tones provide warmth against a **neutral base palette**, contributing to a calm and inviting interior. A graphic curved feature wall introduces **subtle movement** and texture while remaining understated.

Warm **timber finishes** and **herringbone flooring** establish a cohesive material palette, creating a calm and inviting atmosphere. The wardrobe is designed with **open hanging sections, drawers, and overhead storage**, maximising functionality while maintaining a clean and organised appearance. **Integrated lighting** within the wardrobe **enhances visibility and highlights the material textures**.



Lighting was a key strategy to establish mood and enhance spatial definition. Concealed LED lighting beneath the bed and bedside table creates a floating effect and soft ambient glow, while window light is gently modulated through patterned blinds.

Futuristic Bedroom

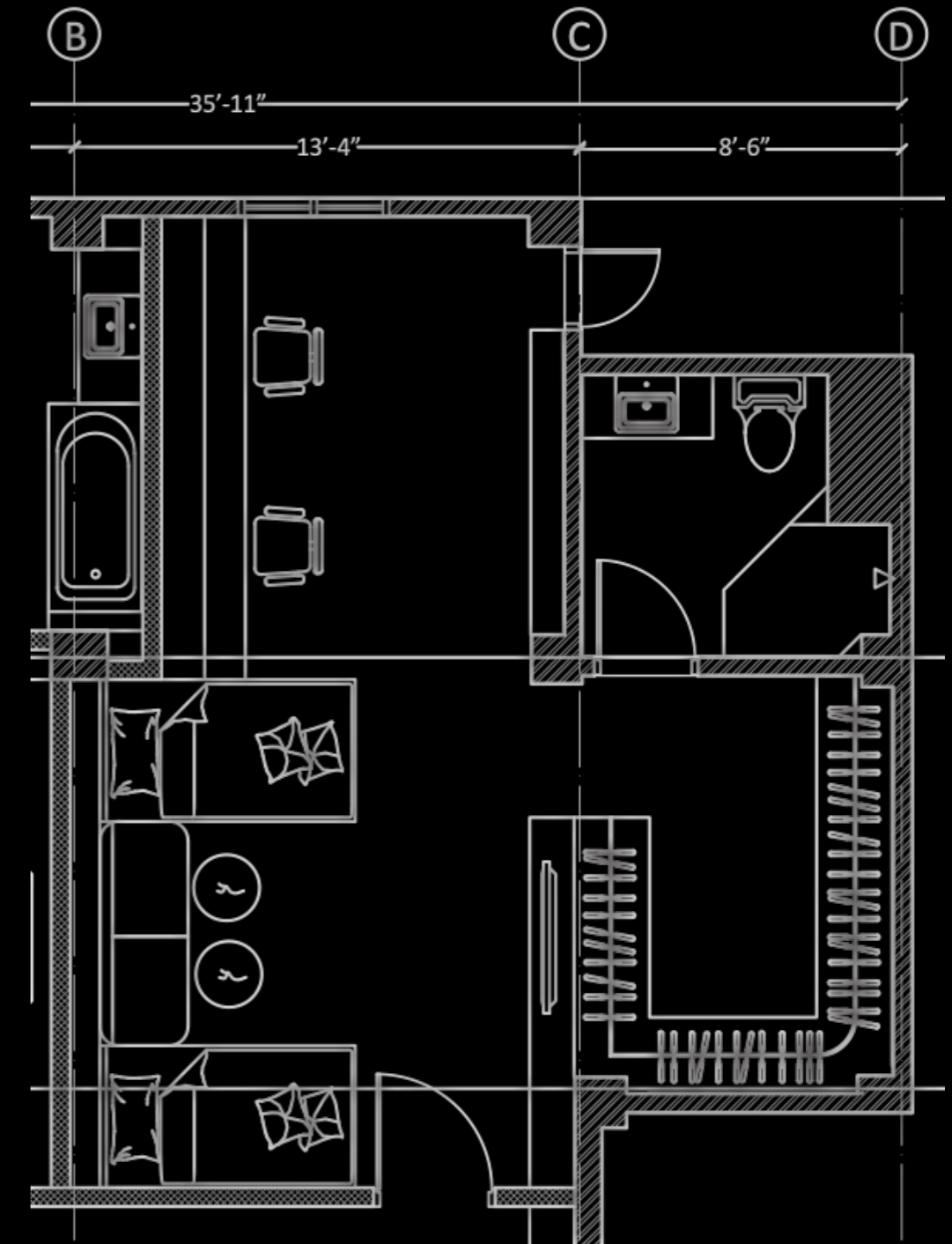


Type	- Bedroom Interior
Site Location	- 14th Street, Yangon, Myanmar
Area	- 550 sqft
Role	- Interior Designer
Programs Used	- Sketchup, AutoCad, Vray
RIBA Stage 4	- Technical Design

Concept

This project was developed for **two young clients** who share a passion for gaming and adventure. The design concept takes inspiration from a **spaceship** environment, using a **hexagonal geometry** and subtle lighting to evoke the sensation of being in outer space. Small reflective spotlight details suggest **stars**, contributing to an immersive atmosphere that enhances the **gaming experience**.





Plan

The room accommodates **two high-performance gaming PCs, gaming chairs, and industrial style storage shelves**, all organised to maximise circulation and visual coherence. A layered lighting scheme with cool blue tones supports both focused gameplay and ambient mood settings.

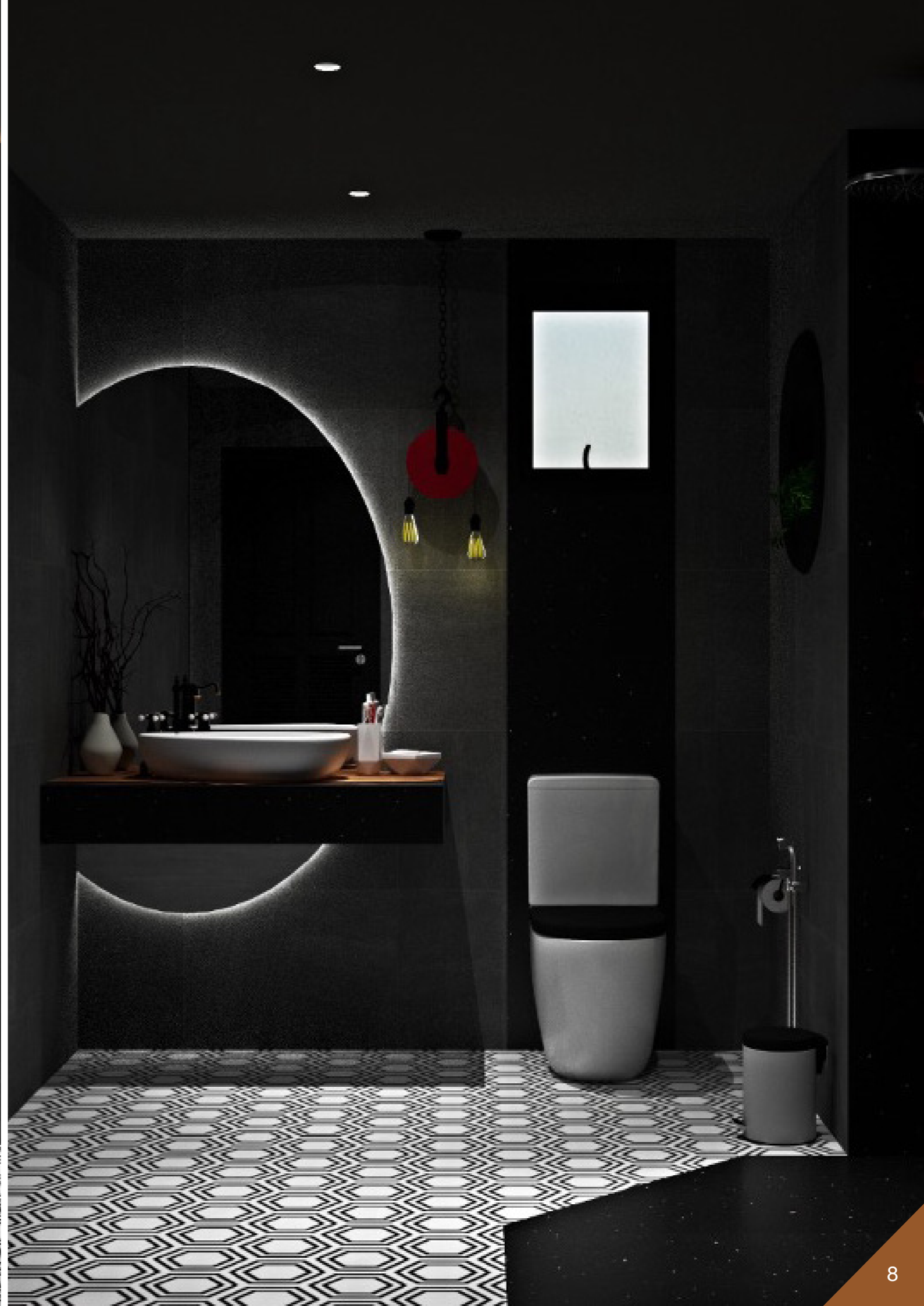


The TV unit becomes a supportive architectural feature within the room. The wall installation incorporates **integrated vertical lighting** inspired by exposed technical wiring systems found in **spacecraft interiors**. These illuminated lines create a structured, graphic composition that enhances depth and reinforces the **futuristic narrative**. Beyond aesthetics, the unit provides concealed storage and media organization, ensuring functionality remains seamless within the overall concept.

The closet area was designed to integrate **seamlessly into the overall concept** while prioritising practicality. Built-in storage maximises vertical space and maintains **clean lines**, reducing visual disruption within the immersive environment. The organisation of hanging, shelving, and concealed compartments supports efficient daily use while preserving the room's **cohesive spatial identity**.



Bathroom and WC
adopt an **industrial character** to complement
the bedroom concept. A **suspended chain-light
feature** and an **oval mirror** introduce sculptural
elements while enhancing spatial perception.



Contemporary Double Bedroom



Type	- Bedroom Interior
Site Location	- 14th Street, Yangon, Myanmar
Area	- 550 sqft
Role	- Interior Designer
Programs Used	- Sketchup, AutoCad, Vray
RIBA Stage 4	- Technical Design



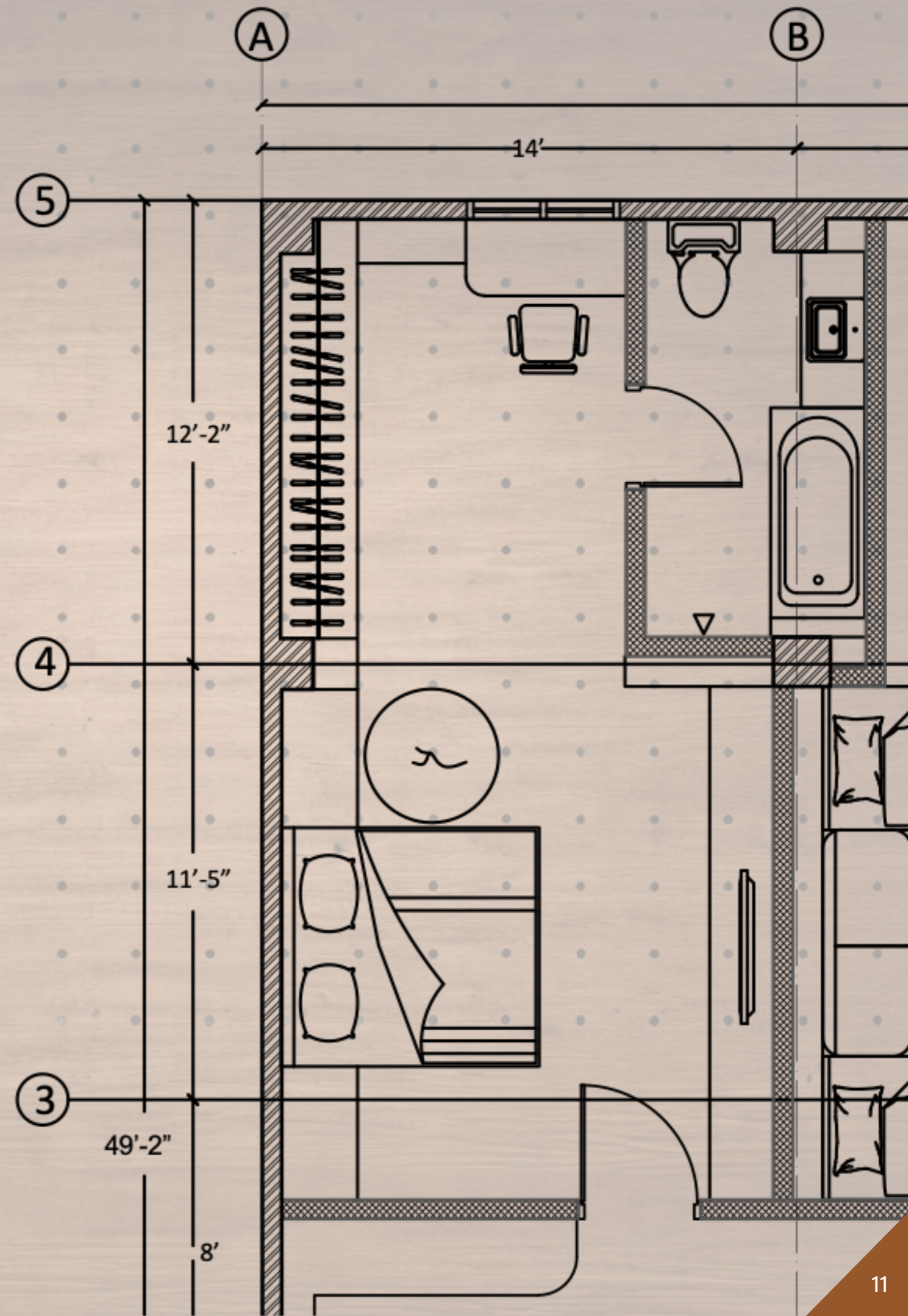
Concept

This project explores the design of a contemporary double bedroom that balances **comfort, material richness, and spatial clarity**. The concept focuses on creating a calm yet characterful environment through controlled lighting, warm finishes, and layered material contrasts.

Storage and circulation were carefully planned to maintain openness. The built-in wardrobe integrates **glass-fronted sections** with internal lighting, enhancing visual depth while supporting efficient organisation.



A compact study desk is positioned along the perimeter wall, allowing the room to accommodate both **rest and focused work** without compromising spatial balance.



Yin Yin Private Residence

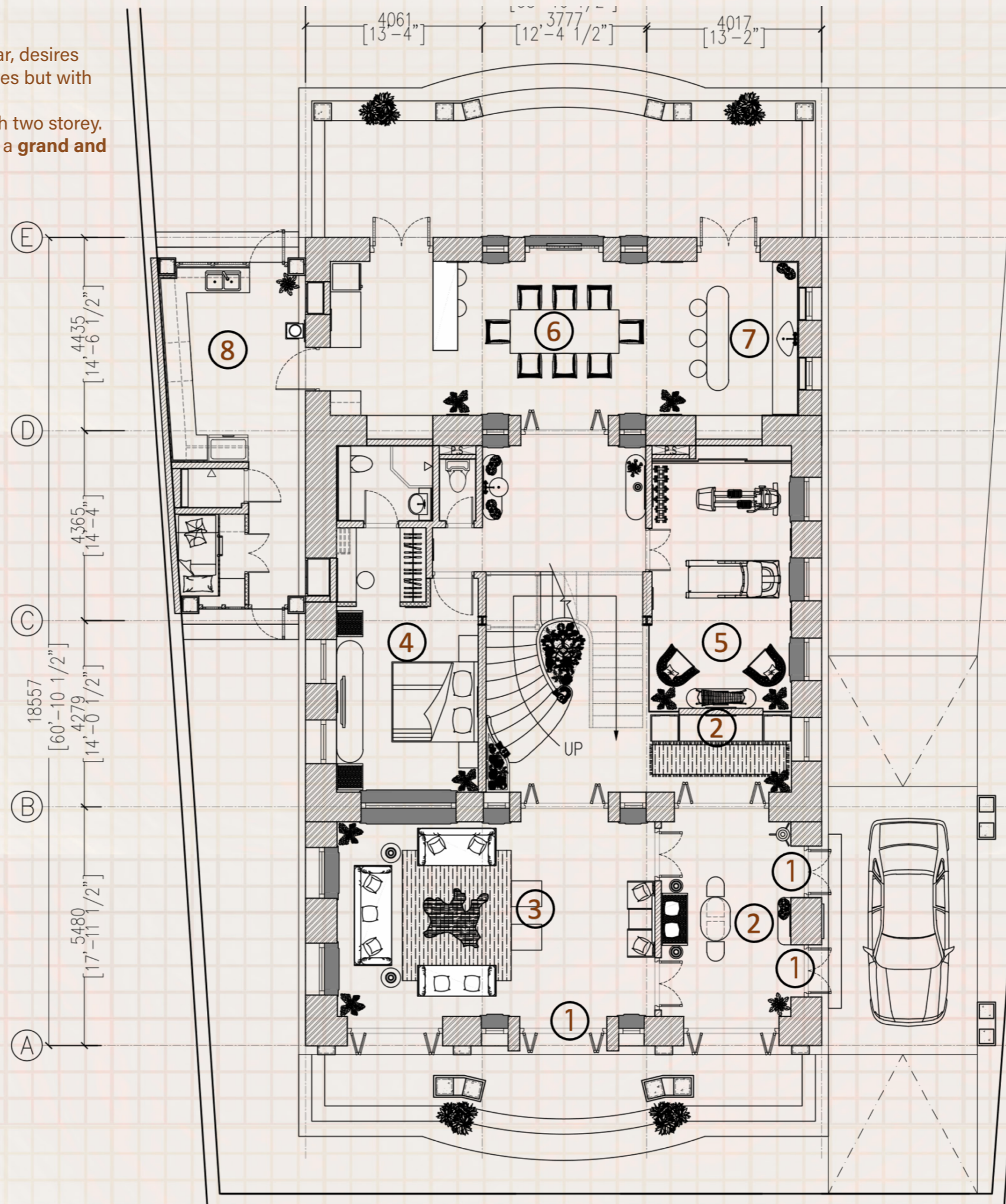


Type	- 2 Storey Residential
Site Location	- Pakkoku
Area	- 5200 sqft
Role	- Interior Designer
Programs Used	- Sketchup, AutoCad, Vray
RIBA Stage 4	- Technical Design

Concept

The family living in Monywa, the ancient city in Myanmar, desires to live in their dream home with Myanmar traditional styles but with modern looks.

When we checked the site, the area was quite large with two storey. The building's interior composition was fit enough to get a **grand and first-class look**.



Plan

As the project type was renovation, we completely changed the existing room with rusted and broken partitions into **wide and bright** where they are proud to call it their home.

LEGENDS

- 1) Entrance
- 2) Lobby
- 3) Living Space 1
- 4) Guest Bedroom
- 5) Gym Room
- 6) Dining Space
- 7) Bar Counter
- 8) Kitchen Room



The first impression we got was **high ceiling** with over **4000mm** from floor finished level. We used white and luxurious style to upgrade the space and **embraced** the high ceiling **with large chandeliers**.

To give the first-class style, we used lot's of furniture made with **Oak wood and gold plated**. Art frames were the main features in this home showing how they live their lives with proud and outstanding taste.



Originally this house has **4 entrance doors**. We used **2 doors** at the left side of the plan as an **entrance to Lobby**. For the remaining door at the in-front, is a direct passageway to Living space.

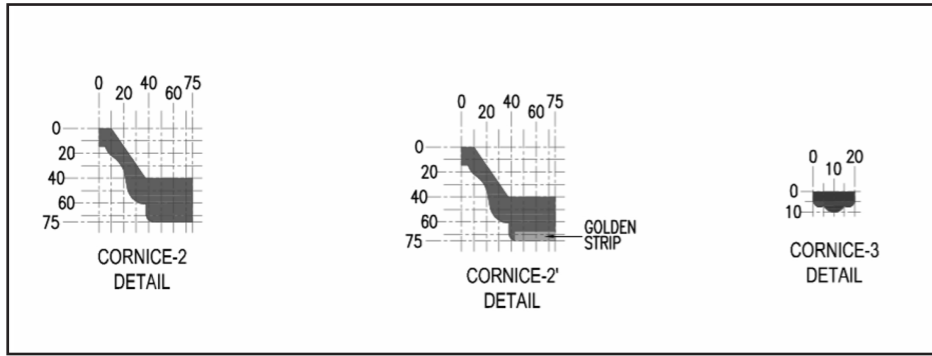
All the pillows, curtains, carpets and seats' cover were carefully chosen with the **local made fabrics** which made this home to be the real home.



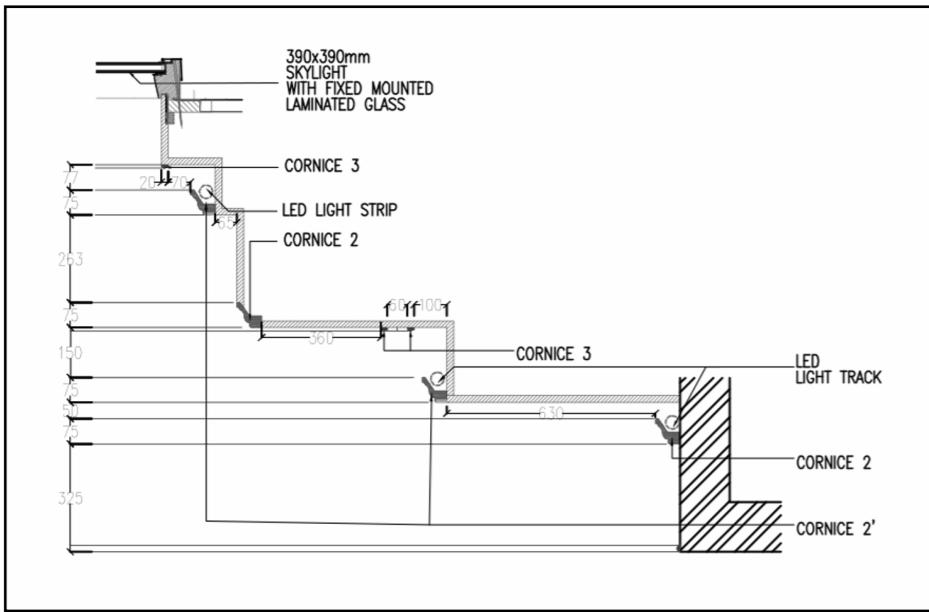


Stair and Lobby

By giving the natural light from the roof top, we installed the **indoor garden** emphasize the visual effects of **connecting with the nature earth**. The main features of this house design started with the traditional styles which matched up with the green nature to become more **splendid and outstanding**.



▽ EXISTING ROOF LEVEL

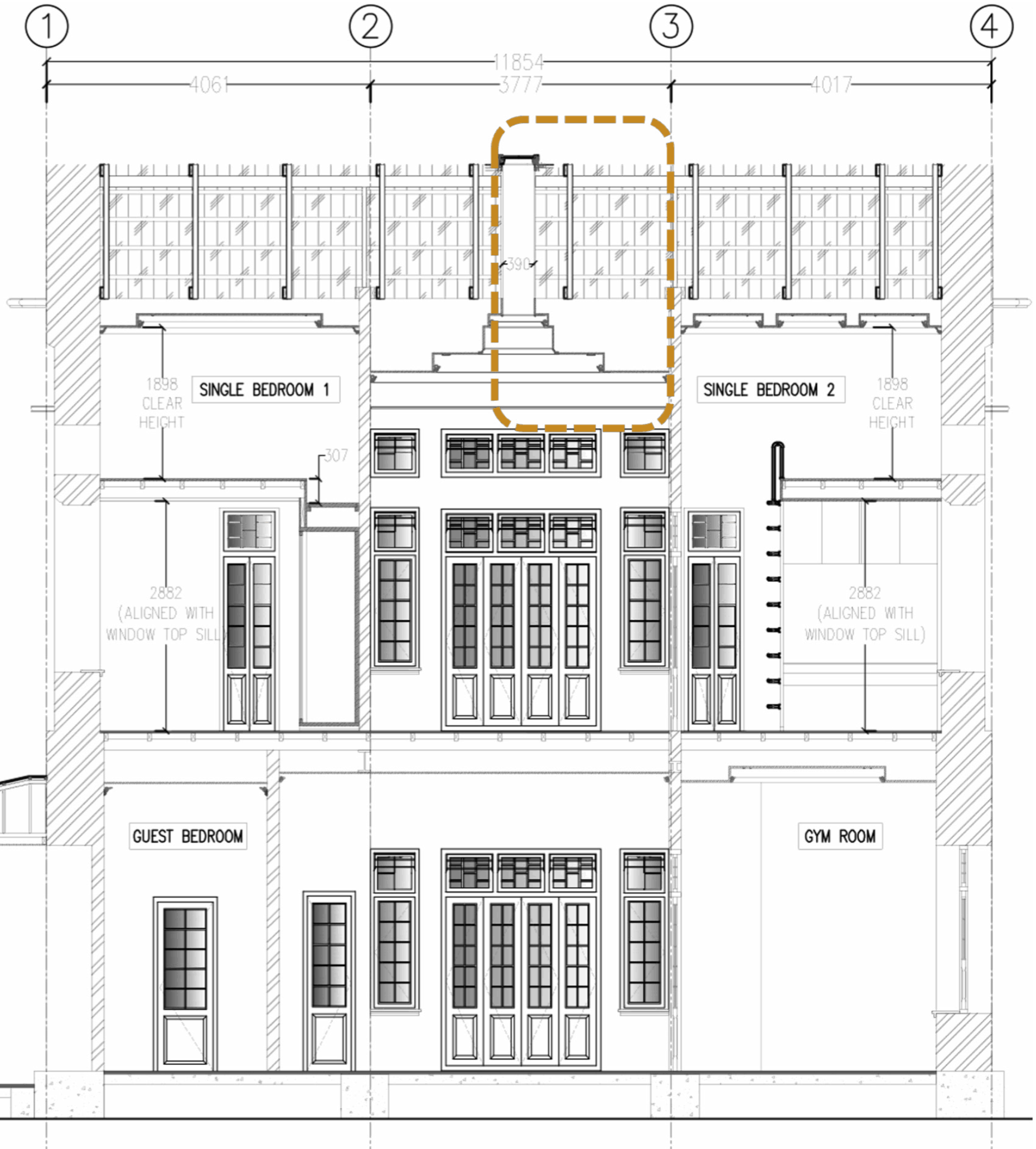
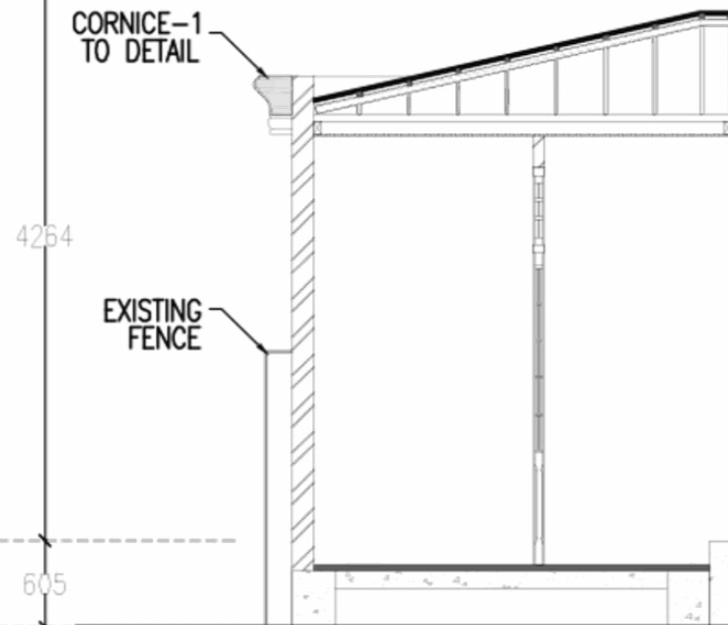


▽ +4870mm FIRST FLOOR LEVEL

For the grand style, we design the staircase ceiling with 3 different ceiling levels and end up with fixed mounted laminated glass for natural lighting.

▽ +605mm GROUND FLOOR LEVEL

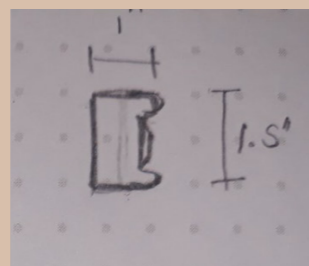
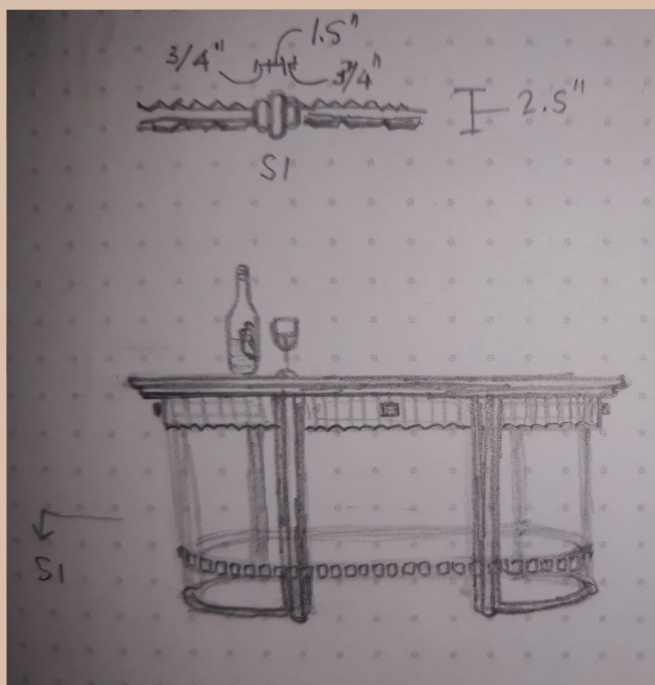
▽ +0 COMPOUND LEVEL





(6) Dining Space

Bar Counter



Coconut Flesh Cutter

Sometimes, our individual design did not go with the initiated styles. But **if it goes well and match perfectly fine, we used it in our project.**

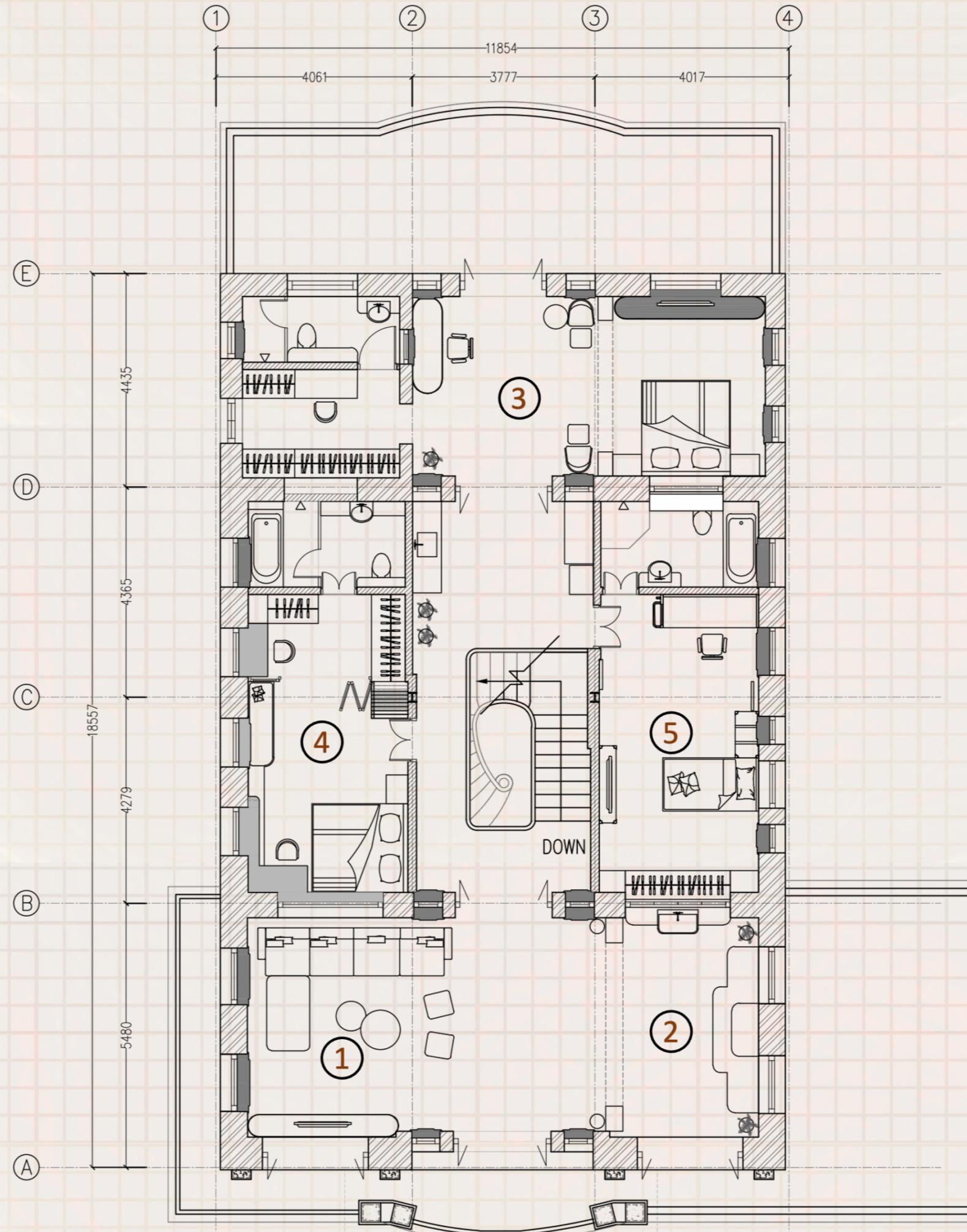
This bar counter was a perfect example for it. When I was thinking for the design, coconut flesh cutter came into my mind and I started to go with it and developed this furniture design.



Plan

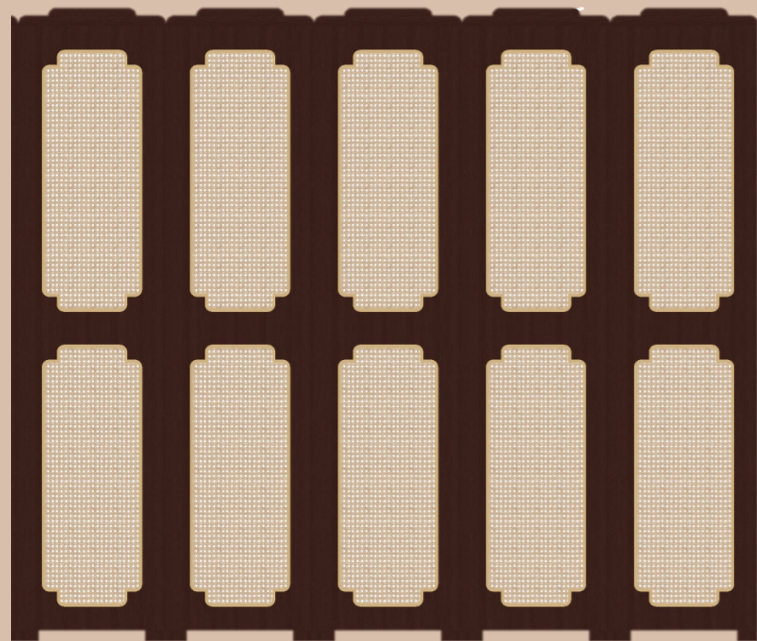
The first floor includes **three family bedrooms and a living room**, where the shrine is located and separated by a partition.

Using the traditional folded partition was the significant way not only to make the interior space wider but also to give the users private space.



LEGENDS

- 1) Living Space
- 2) Shrine Space
- 3) Master Bedroom
- 4) Single Bedroom 1
- 5) Single Bedroom 2



Partition

The Family's religion is **Buddhism**. They would like to get the shrine space wider. So that when they want to invite monks and donate alms, they could get wider space after removing foldable partition.

On a normal day, they could get separate places which is one for living space spending private times with the family and the another is the shrine to pray and meditate.

Master Bedroom

We made the existing window as a bedhead and decorated with the art work made of golden brass.





Double Bedroom 1

Ceiling height with 5000mm gave a private little space by installing mezzanine floor. As the owner of this room is a beautiful young lady, we gave a full of princess vibes in this room.

Crown canopy over the bed head and a chandelier completed this room with the concept of 'princess vibes'.

Double Bedroom 2

Ceiling height with 5000mm is enough for installing mezzanine floor and giving a private space for the young boy.

Since the boy love to play video games, we made his room simple and magnificent; combining the adventurous and explorer mode with the wallpaper of ship and world map images.



3-Storey Residential Design



Type	- 3 Storey Building
Site Location	- Yangon, Myanmar
Area	- 190 m ²
Role	- Freelance Designer
Programs Used	- Sketchup, AutoCad, Twinmotion
RIBA Stage 4	- Technical Design

Concept

This three-storey apartment project is based on a mother's decision to renovate the home she once lived in and transform it into three independent residential units which is one for herself and one for each of her two daughters.

The vertical separation of the apartments represents the daughters' independence and personal growth, while the shared building structure symbolises the enduring bond between mother and children.

Warm wooden materials are used throughout the exterior and interiors to create continuity across all three units, reinforcing comfort, familiarity, and emotional warmth. This material language ensures that, despite being divided into separate apartments, the building retains the atmosphere of a single family home.

Plan

This three-storey apartment project is developed on a limited site measuring 20' x 40'. After excluding a 1-foot setback on all sides in accordance with Yangon City Development Committee (YCDC) regulations, the buildable area was reduced to 18' x 38'. Designing three separate household units within this compact footprint presented a significant spatial challenge.

Following multiple discussions with the construction team and YCDC officials, the main staircase was positioned at the centre of the building. This strategic placement helped comply with building height regulations and avoided the requirement for an additional emergency staircase.

Each storey is designed as an independent residential unit, containing two bedrooms, a living space, a kitchen, and a separated bathroom and WC. The planning and drafting process involved extensive evaluation of room sizes, circulation, and spatial efficiency, with several layout options explored and refined during the initial design stage to meet both regulatory and functional requirements.

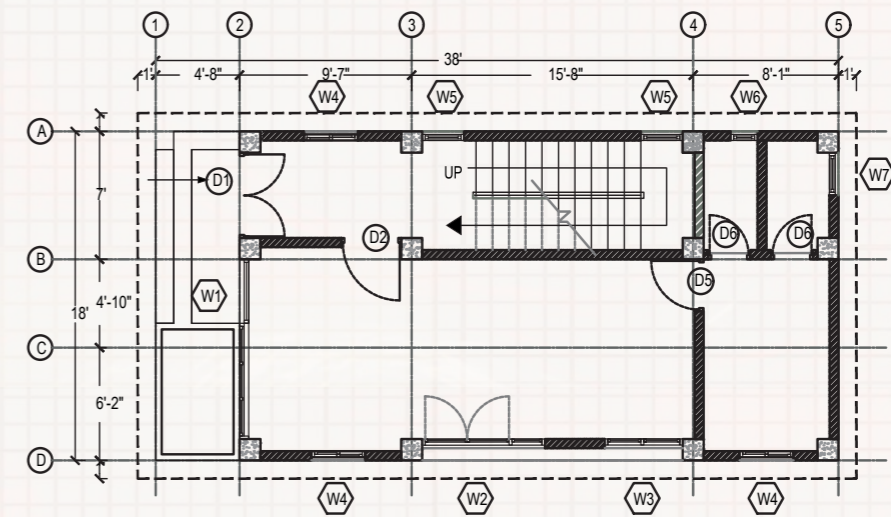


Metal Bars

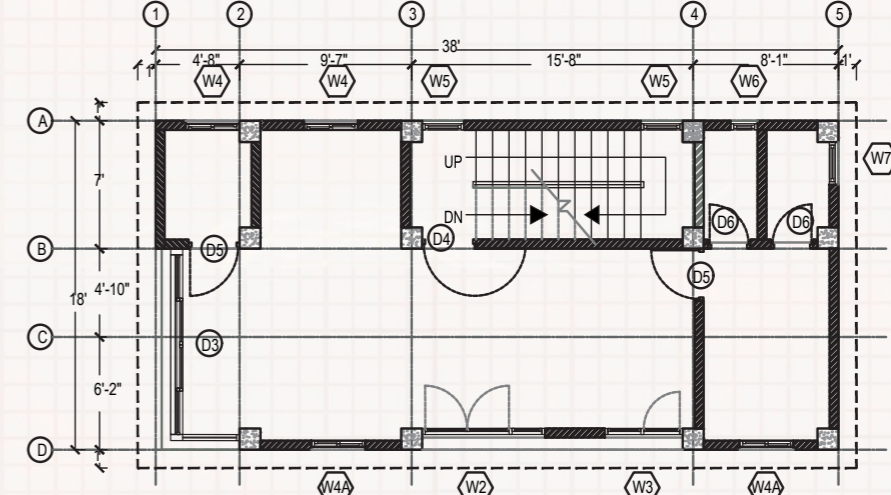
Powder-coated metal bars are installed at the top level of the building as part of the **roof structure**. These vertical elements visually **connect the two timber-clad walls**, creating a cohesive architectural feature. In addition to enhance the aesthetic quality of the façade, the bars allow **natural daylight** to pass through, casting **dynamic shadows on the wall surface**. This space also provides an opportunity for the clients to **grow plants**, introducing greenery while enjoying a **landscape view of the surrounding street**.

Daylighting and Passive Ventilation

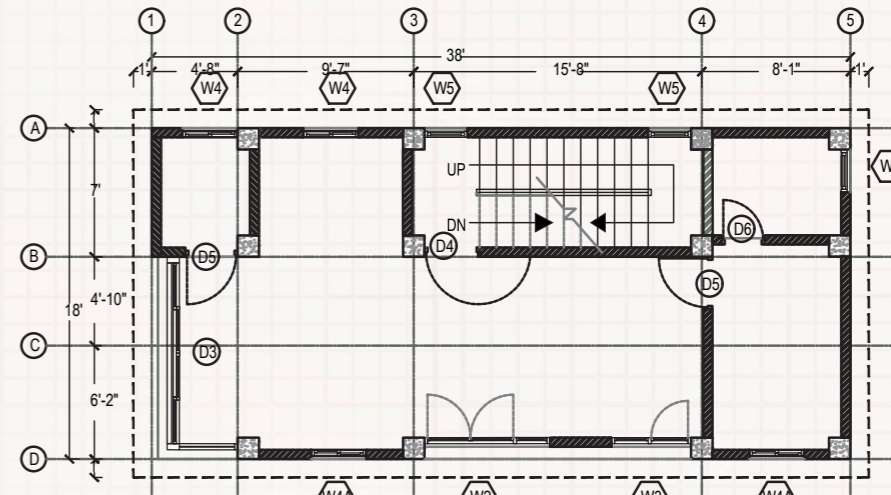
Glass sliding doors are connected to a veranda to enhance the **connection between the interior and exterior spaces**. Although the site area is limited, the design **prioritises natural daylight and ventilation** to create a comfortable living environment. Since the building is located in Myanmar, where the **climate is predominantly hot** throughout the year, the **veranda and large glass openings help improve airflow and allow natural light to enter the house**, reducing heat buildup while maintaining a bright and airy atmosphere.



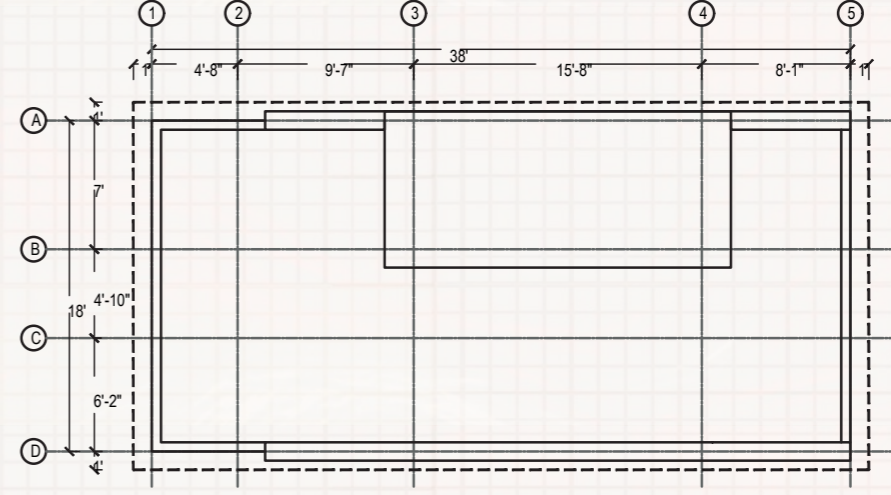
GROUND FLOOR



FIRST FLOOR



SECOND FLOOR



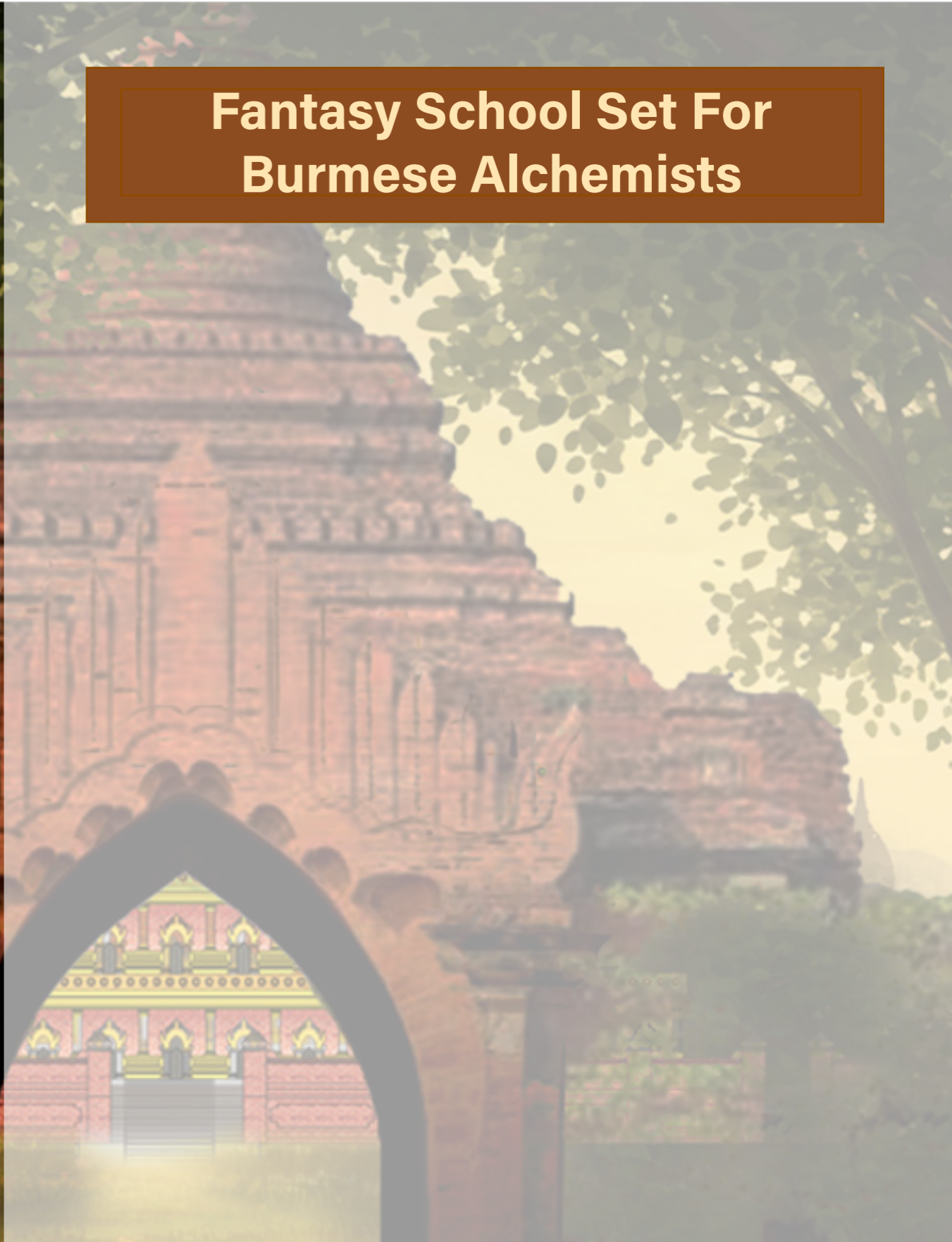
ROOF FLOOR



- LEGEND**
- BOUNDARY LINE
 - COLUMN
 - BRICK WALL



Fantasy School Set For Burmese Alchemists



**Thesis for Master of Interior
Architecture and Design**

Zawgyi, the Burmese Alchemist

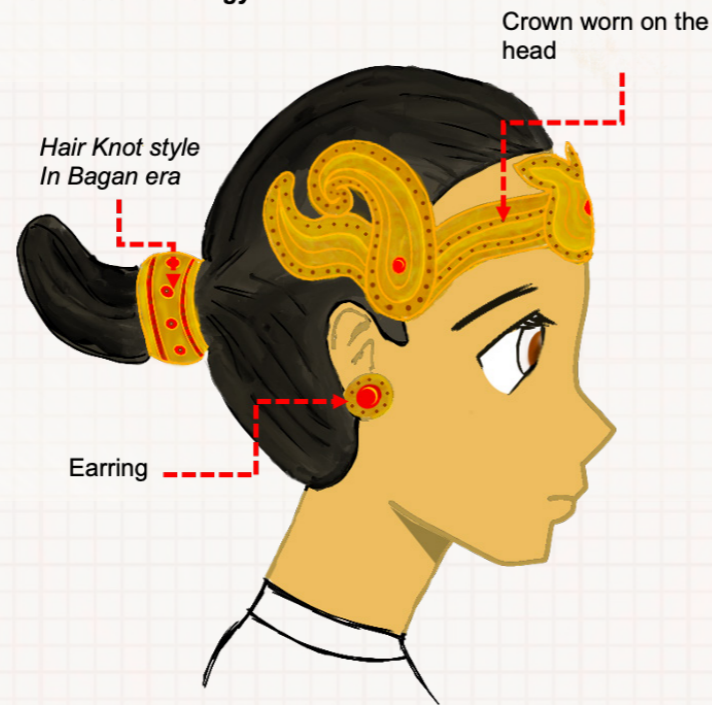
Zawgyi is an alchemist and **seeker of mystical power in Myanmar's mythology and folklore**. Burmese alchemy aims at **achieving an eternally youthful body, and thus to create a beauty that never fades, and a youth that never dies.**

Alchemy School Set Design

The fantasy set design is based on the royal academy school which is **located during the Bagan era**. Visually, students are identified by their **traditional Bagan style robes in red and gold**, which were described how Zawgyi wore in the folklores and magazines. Among the magic items belonging to his classmates, **Zawgyi will be the only protagonist with an elongated magical stick**, which allows him to **fly and travel beneath the earth and oceans.**



Character of Zawgyi



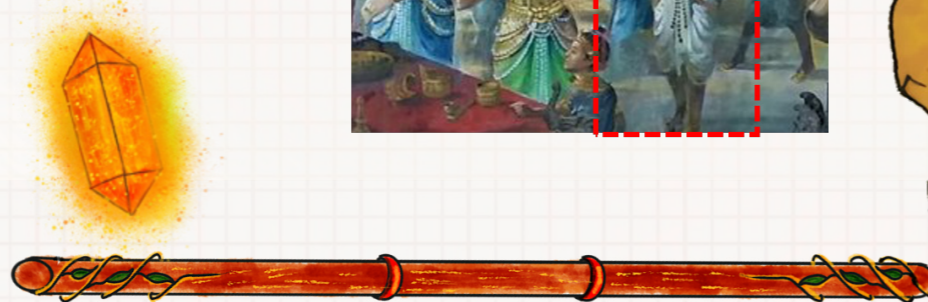
Zawgyi Character



A man with crown head in mural painting at Bagan museum



Philosopher's stone and Zawgyi's magic wand



AGGIYA ROYAL ACADEMY

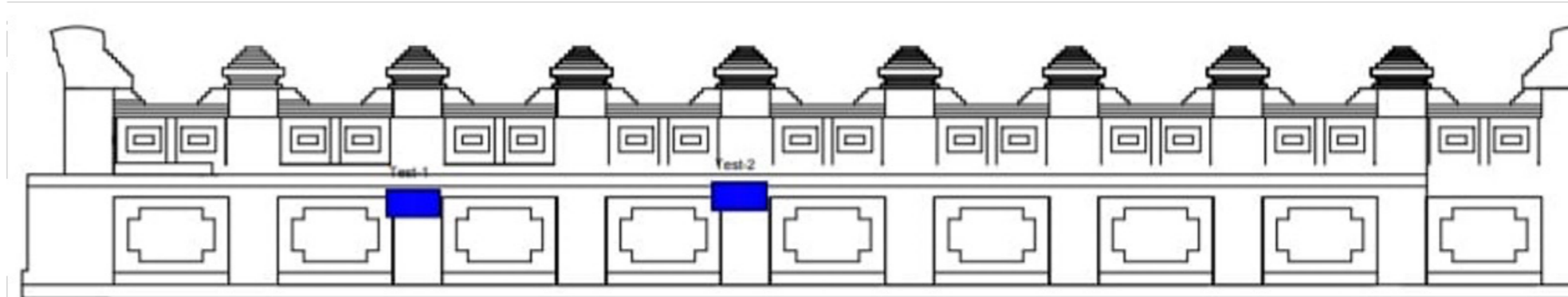
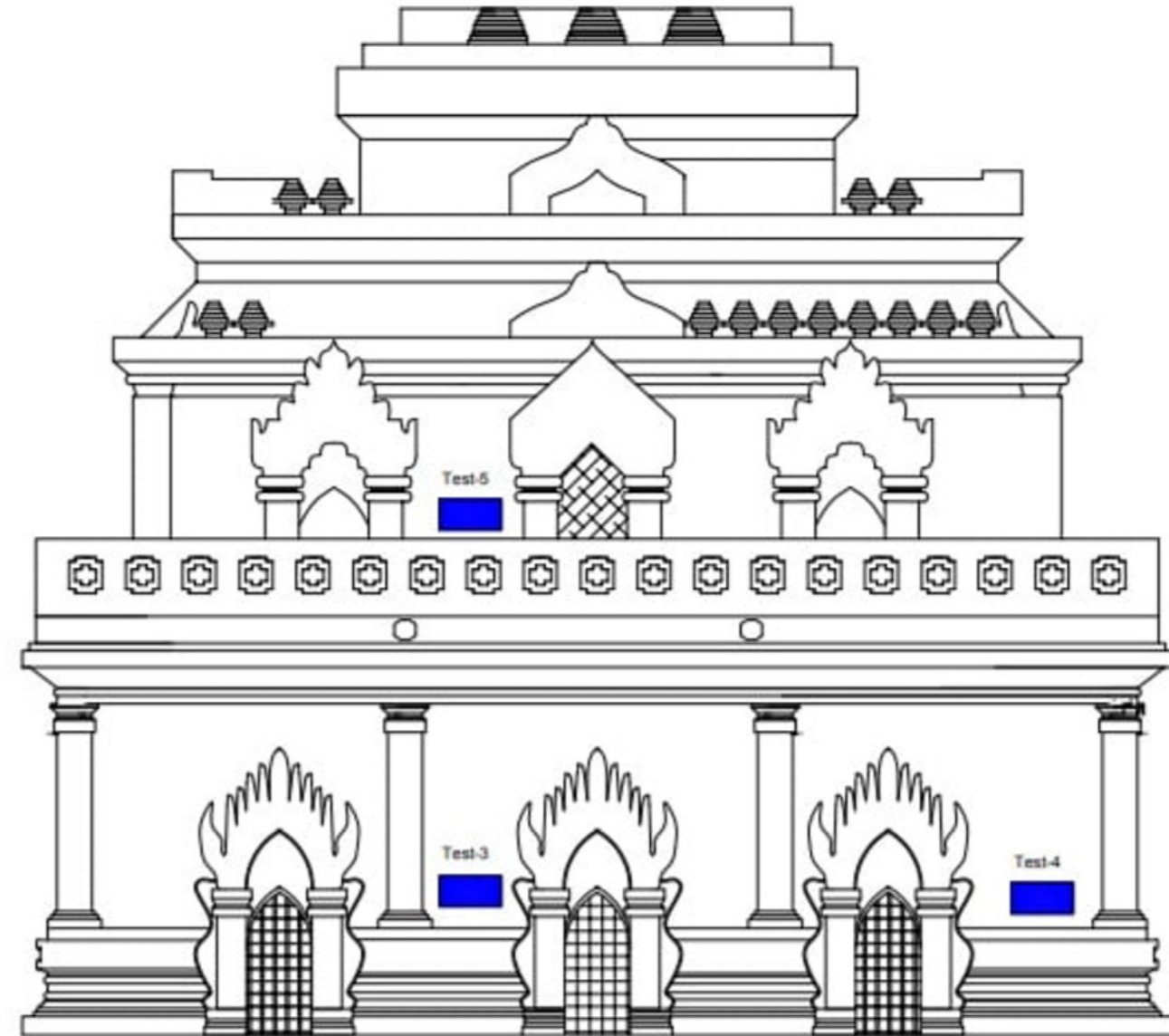
THE ENTRANCE GATE

The name Aggiya came from the definition of alchemy from the Myanmar language. The entrance gate is from the common boundary wall between South Guni Temple and North Guni Temple. Within the narrative, people who got supernatural power can only enter through the gate and get to the academy. Normal pedestrians will only see this gate as a boundary between two temples.

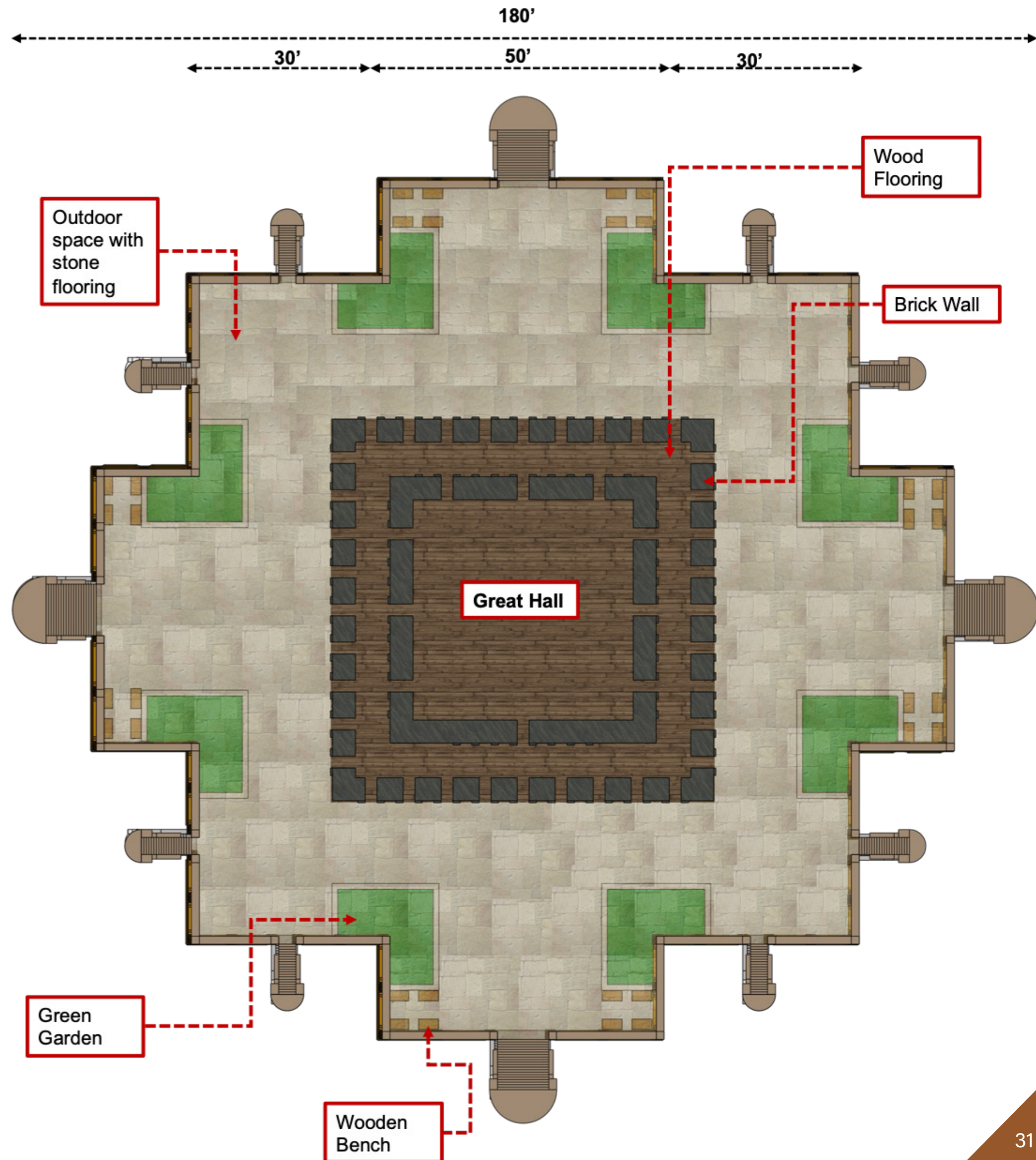


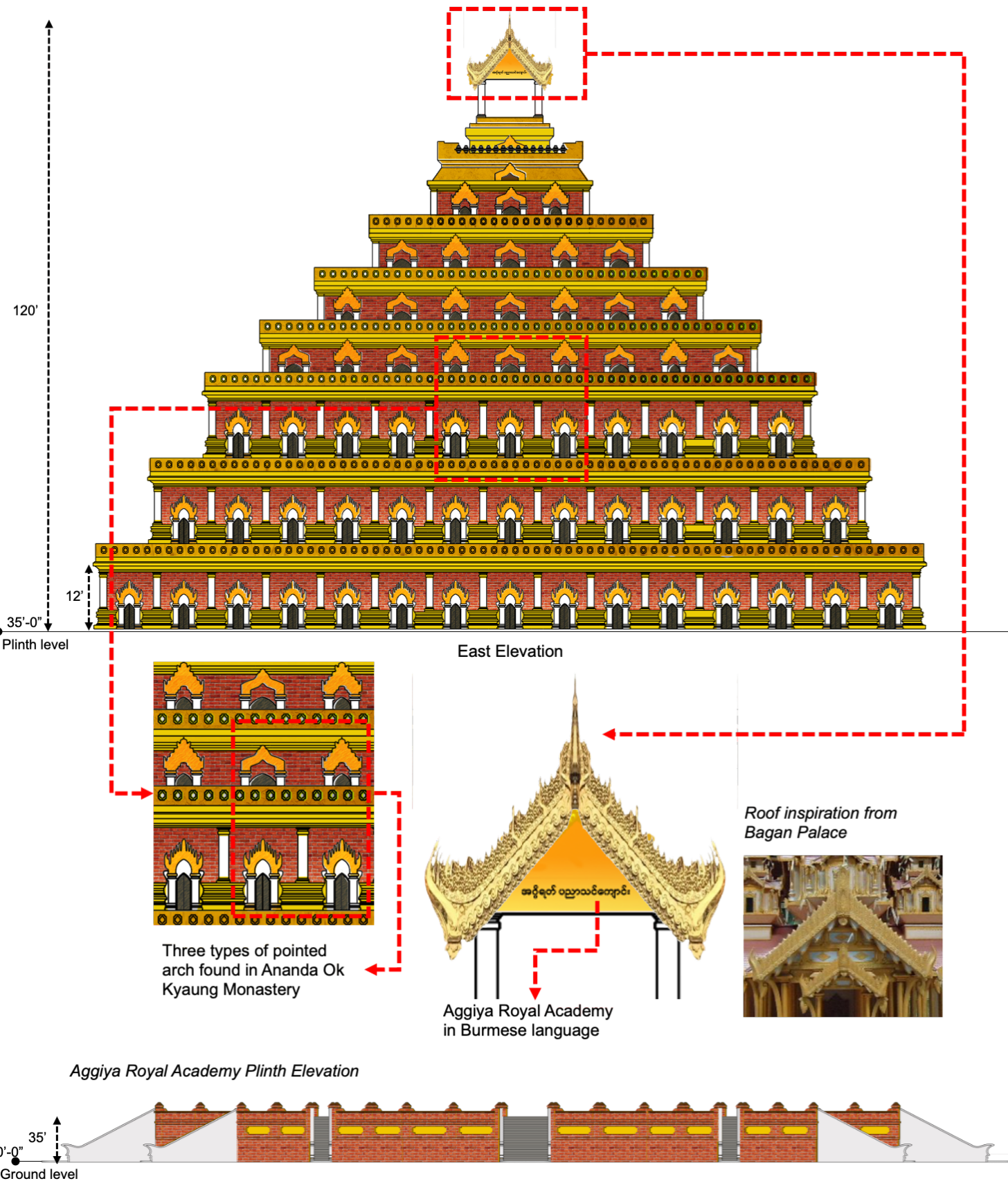
ROYAL ACADEMY BUILDING

The building got **inspiration from Ananda Ok Kyaung Monastery**. It is the most famous and **best-preserved brick monastery of the Bagan archaeological zone**. Most monasteries in Myanmar's later history were made of wood and thus did not survive. This Monastery is rare and enduring, made of brick and stucco. It provides **a rare surviving example of monastic architecture in the Bagan era**.



However, the **original** monastery's spatial capacity and vertical layout **were not enough to meet the requirements of the Aggiya Royal Academy**. As a result, the monastery was **redesigned with digital effects** to feature **broader span areas with seven levels**, and an **elevated plinth level to enhance functionality and scale**.





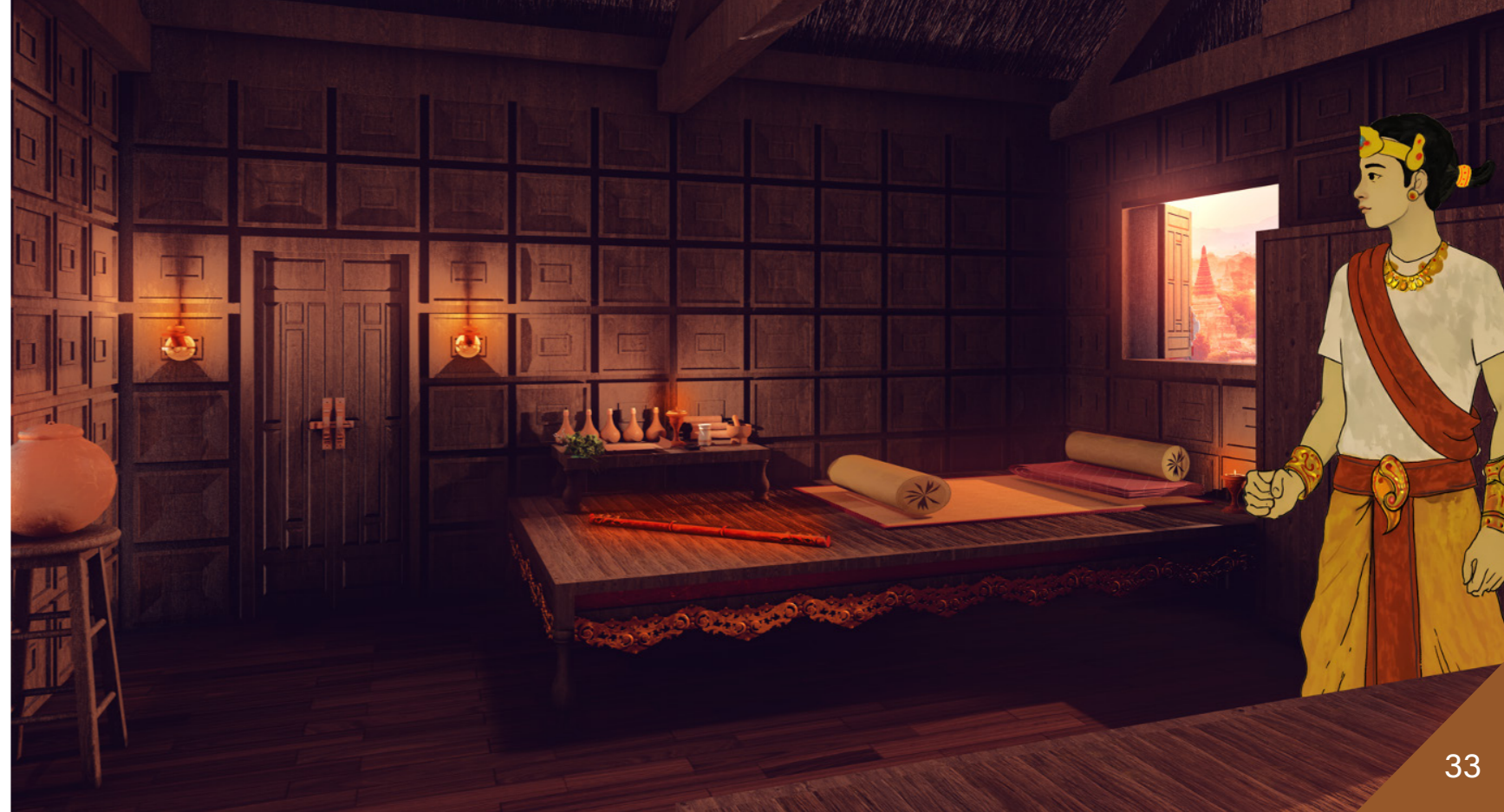
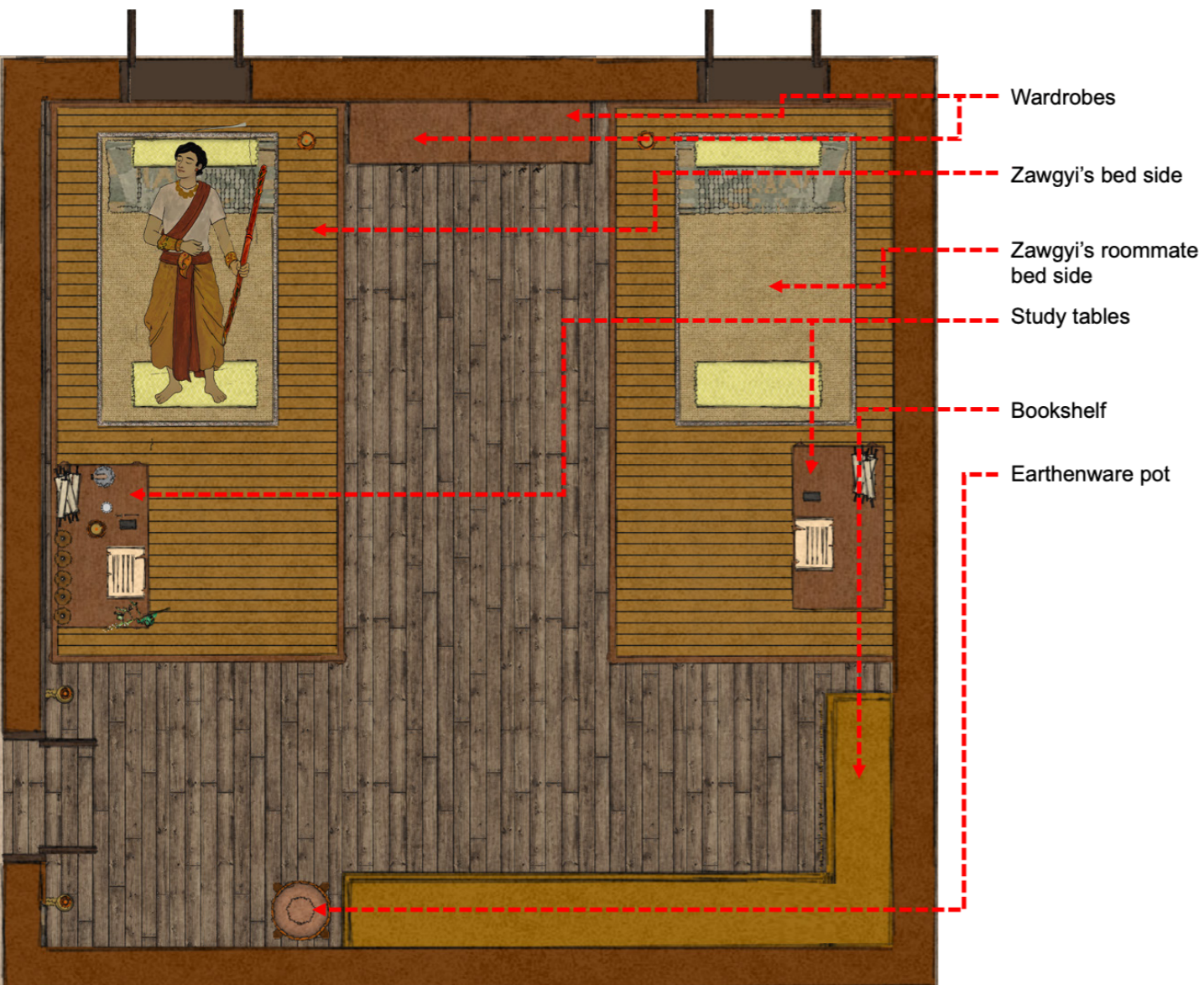
Aggiya Royal Academy is designed with **arches by adding 15 inches span between each of them**. These arches also provided **natural ventilation and light within the interior**. The **ceiling height** for each floor will be **12 feet** high in order to avoid suffocating due to the massive brick structure. **Ground floor has a great hall** in the center for the social events and ceremonies. Its **outdoor space is 30 feet wide** for social interactions. To **access** this raised ground level, **3 staircases** are added on each side of the location. **First to seventh floors** are surrounded by a **10 feet wide verandah**, serving as a transitional space between the interior and exterior environments. **Roof terrace** is raised on top of the building for a **private outdoor space**. Motifs are adopted from the art created in the Bagan architecture. **Golden and brownish** colour themes are used to reflect the **styles in the Bagan era**.



ZAWGYI'S DORMITORY

The **dormitory set location** is chosen at **Bagaya Monastery**, which was built during the **Inwa era** and is **well-known for its detailed wooden architecture and earliest well-documented historical record**. As there is only a hall in the monastery, the dormitory is constructed in the studio with a wooden structure using dark wood, reflecting the Bagaya Monastery architectural style.

In the narrative of Zawgyi attending the alchemy school, **each dormitory** building contains **four attached bedrooms**, accommodating **two students per room**. The academy has **20 dormitory buildings**, located behind the main campus, deep within the Himalaya forest.





The world of Zawgyi is brought to life through fantasy set designs which are enhanced by digital effects.

The narrative and spatial function provides the sense of wonder and act as narrative frameworks through form and atmosphere. Through the thoughtful combination of historical references and fantasy storytelling, the set brings the narrative into a visual world with a meaningful presence that draws the viewer into a reimagined past where the myth of Zawgyi transfer into reality.

This thesis provides several valuable insights for interior design practice.

Design can tell a story

This thesis helped me understand how interior spaces can support storytelling. Layout, lighting, materials, and architectural details can **communicate meaning and atmosphere**.

Spaces can reflect people and personalities

I learned how interior environments can represent different characters or users. Colour, furniture, and spatial arrangement can **express identity, mood, and behaviour**.

Atmosphere is created through design choices

Lighting, textures, colours, and materials play a strong role in shaping the **emotional experience of a space and making it feel immersive**.

Concept should guide the design process

I found the design process useful, developing concepts, planning the space, and refining visual details to **create a cohesive environment**.

Helpful for my interior design practice

These ideas influence how I approach design, encouraging me to **create spaces that are not only functional but also expressive, atmospheric, and meaningful**.

The complete version of my thesis is available to read here:
<https://maykhindesign.uk/set-designs-featuring-fantasy-school/>

maykhindesign.uk



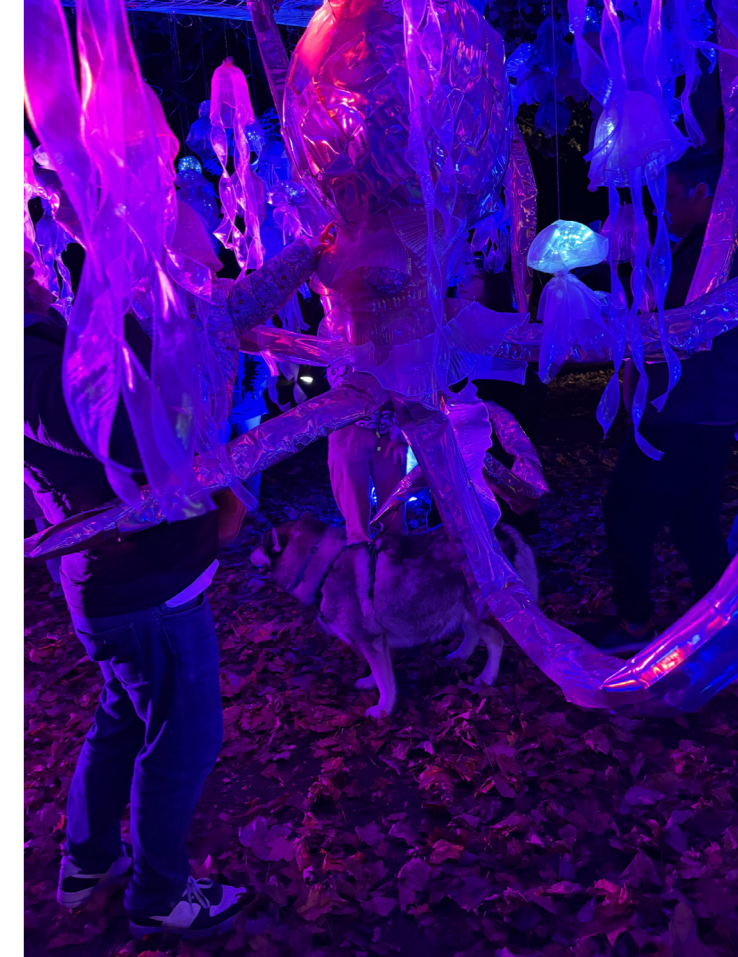
Voices from the Depth



Type: Light Installation in St Mary Church (Portsmouth)
Mentors: HEINRICH & PALMER
LOCATION: St Mary's Churchyard
Year: 2024

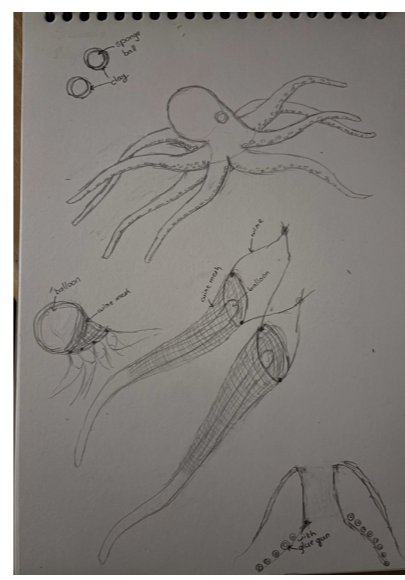
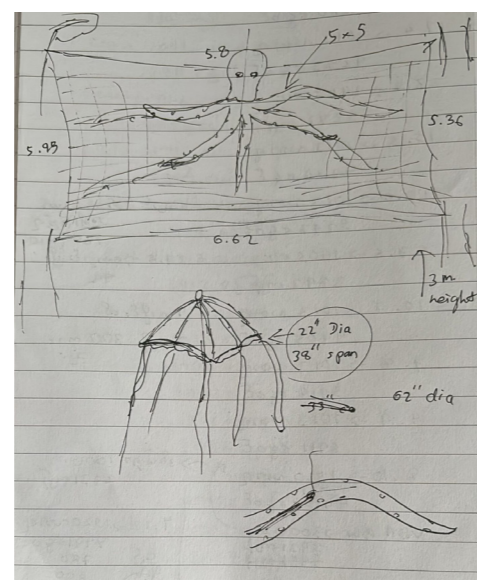


The project "Voices From The Depths" is an immersive light installation inspired by the geological and historical significance of St. Mary's Churchyard. The design transforms the outdoor space into a glowing underwater world, featuring bioluminescent sea creatures like jellyfish and a large, luminous octopus. The interplay of light and shadow creates an enchanting, otherworldly atmosphere, inviting visitors to experience the magic of an imagined ocean floor.



Design Stages Under the Sea

At the lighting festival at St Mary's Church, the main indoor installation, Once a Sea, was created with an immersive bioluminescent light experience. Inspired by this work, we developed an outdoor installation responding to the same underwater theme. Drawing from the imagery of the sea and marine life, our piece translated the atmosphere of Once a Sea into an exterior setting, exploring how light and form could extend the narrative beyond the church interior.



The full information about this project can be viewed here: <https://maykhindesign.uk/light-festival/>



Commissioned by St Mary's Church, Fratton, Portsmouth in partnership with Fratton Together with support from Arts Council England, Portsmouth Creates and the University of Portsmouth.

Strength & Circularity



Reimagining waste through structure, textiles, and regenerative design



As part of a collaborative sustainability project, I co-created Strength & Circularity which is a delicate yet structurally resilient installation built from waste materials, renewable resources, and plant-based dyes.

This project explored how design can move beyond aesthetics and become regenerative, circular, and community-driven.



We experimented with:

- Waste textiles
- Subtraction cutting techniques
- Plant-based dyes
- Bamboo
- Structural joinery methods

Using our existing and new skills, together with waste & renewable materials, plant based dyes, bamboo we created a delicate, interactive and visually interesting structure

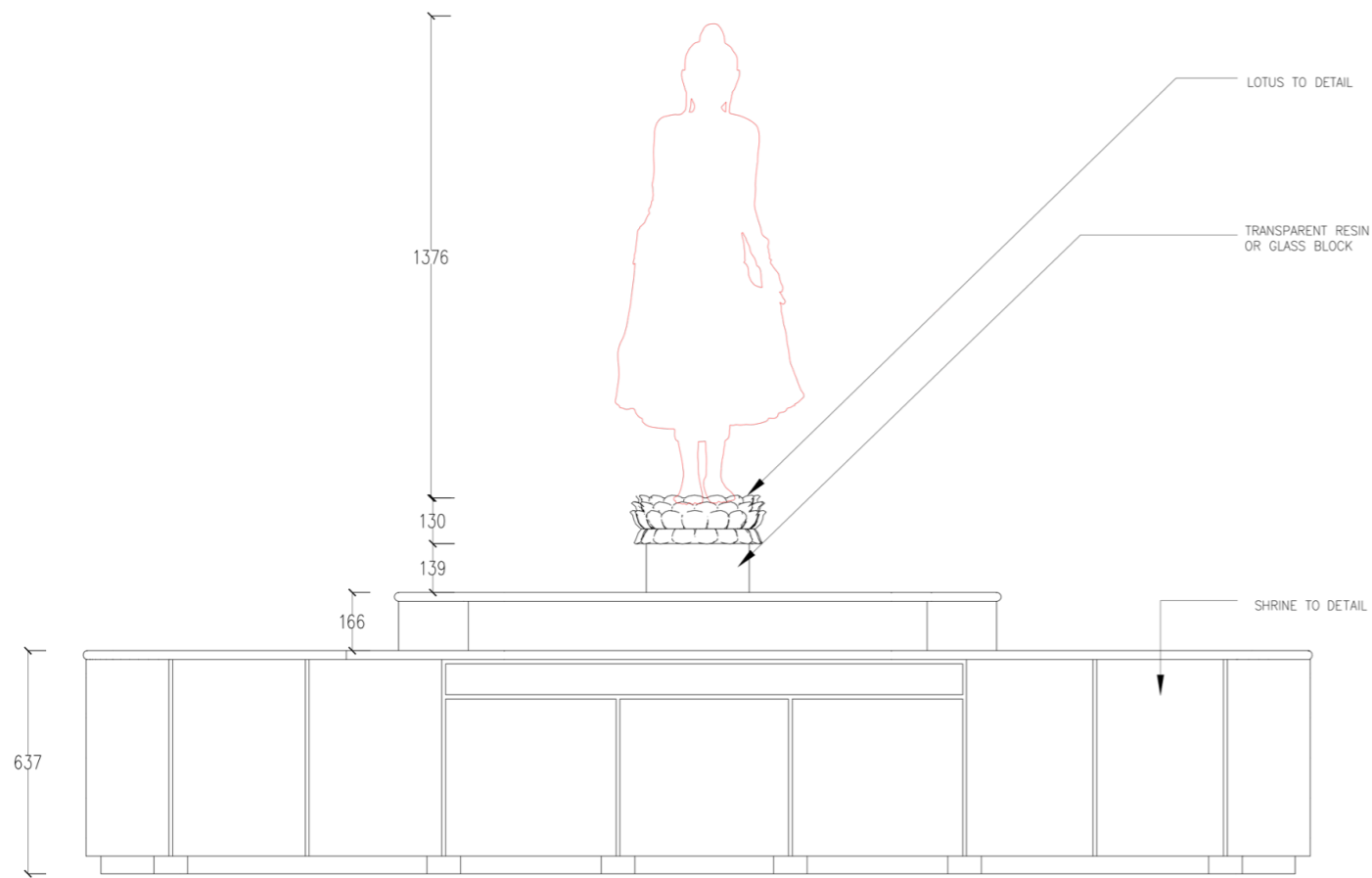
The full information about this project can be viewed here:
<https://maykhindesign.uk/regen/>



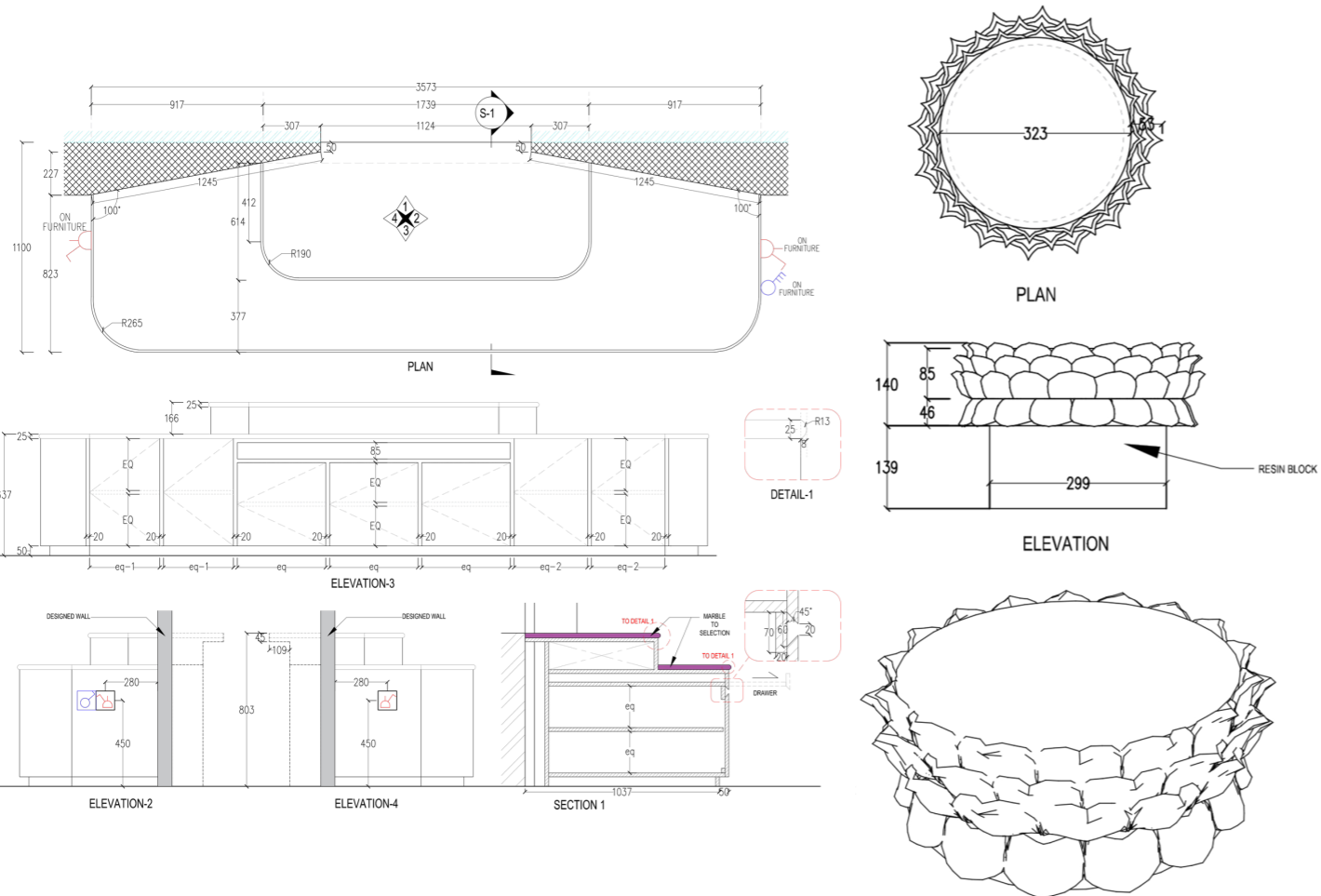
Shrine



- | | |
|---------------|---------------------|
| Type | - Shrine |
| Site Location | - Yangon, Myanmar |
| Role | - Interior Designer |
| Programs Used | - Sketchup, AutoCad |
| RIBA Stage 7 | - In Use |



The cabinet door leaf is sculpted into a cloud form to give the impression of being in the clouds. The base of the Buddha statue is lotus-shaped. The lotus flower is indicated as the sacred flower for our Buddhists, as a legend says that Buddha was born by stepping on the lotus flower.



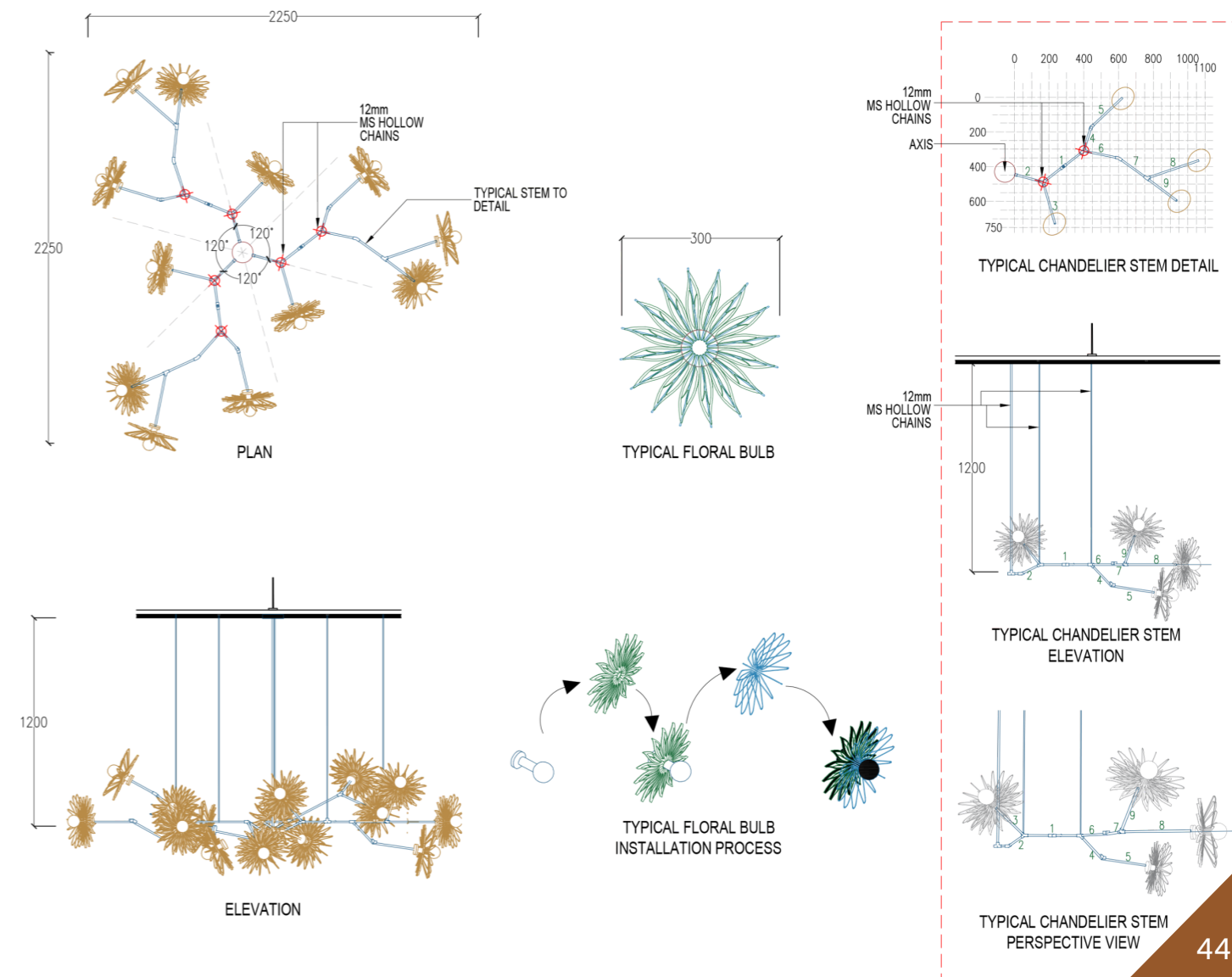
Chandelier



Type	- Chandelier
Site Location	- Yangon, Myanmar
Role	- Interior Designer
Programs Used	- Sketchup, AutoCad
RIBA Stage 7	- In Use



This chandelier was designed for the motel, named "Khayay Yeik". Since the name "Khayay" means Spanish cherry flower in Myanmar language, the design concept was based on it.





» may@maykhindesign.uk
» maykhindesign.uk
» www.linkedin.com/in/kmaykhin