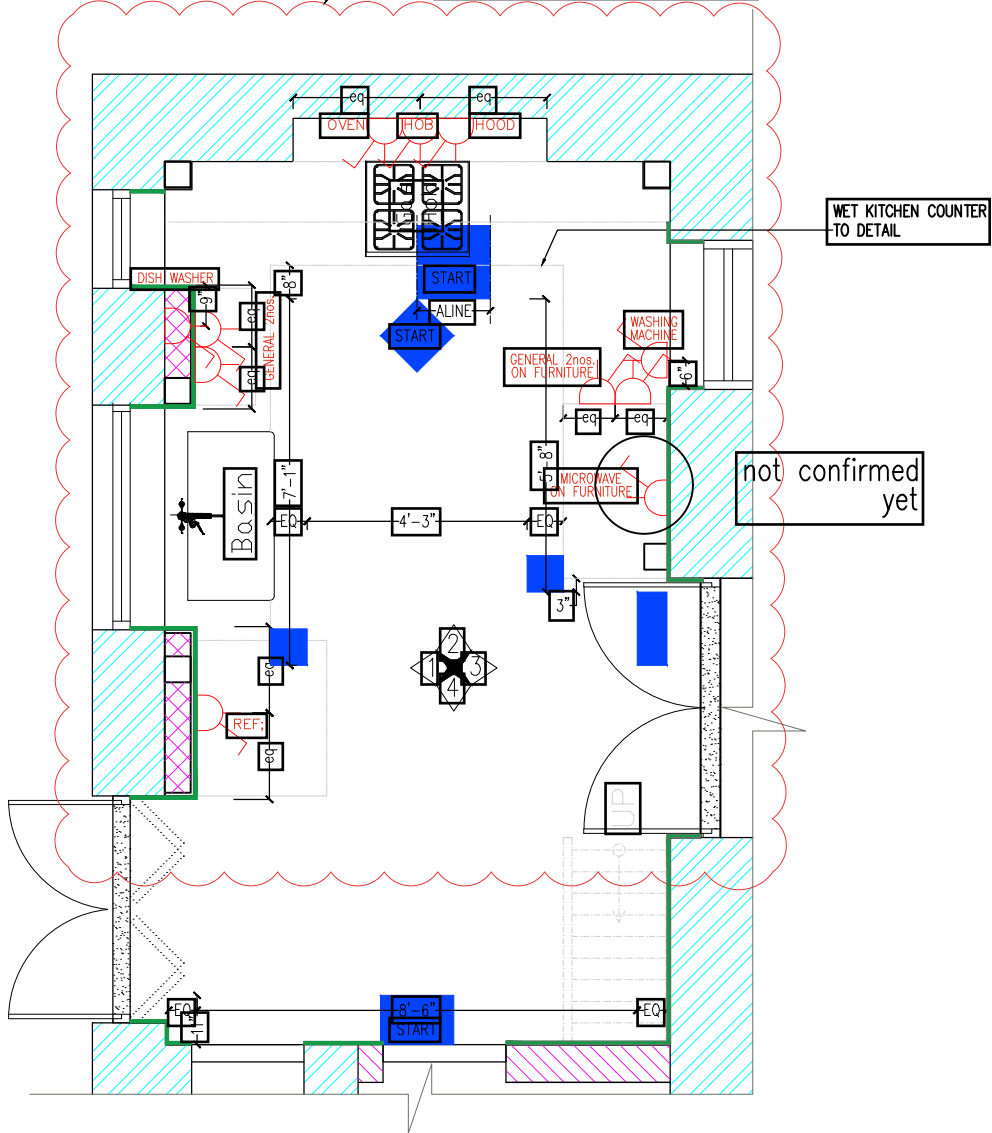
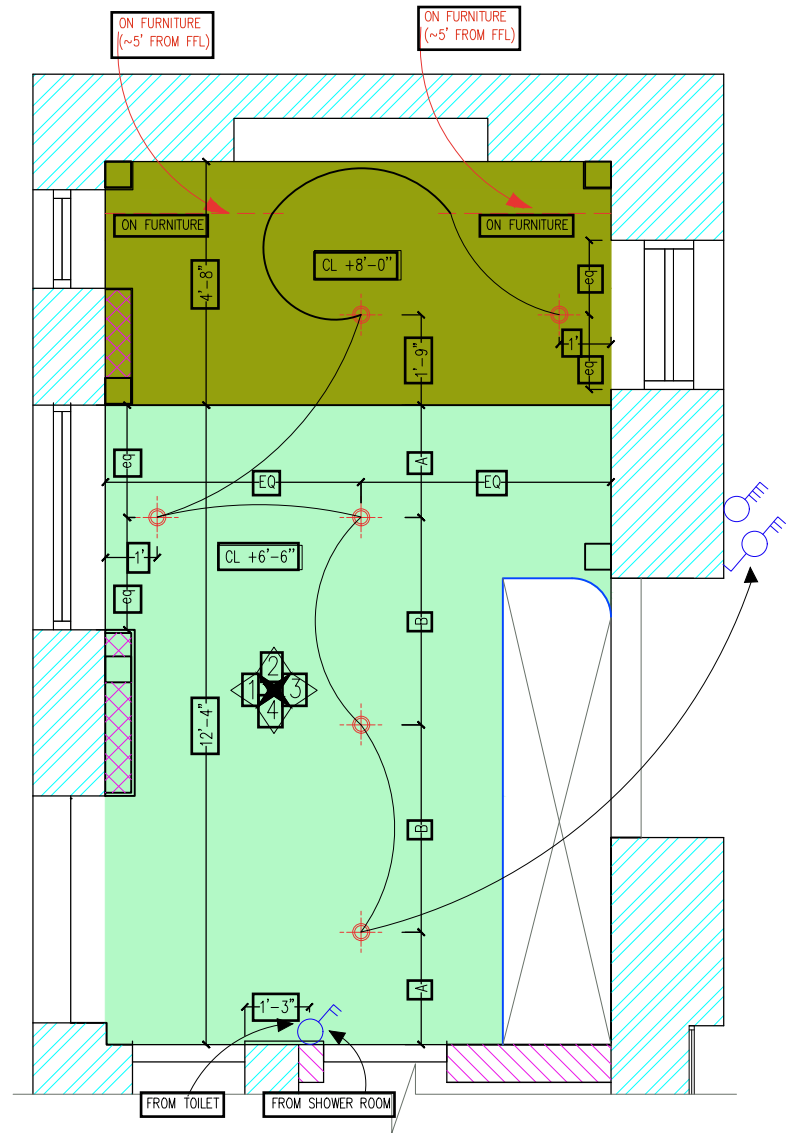


POWER POINT, SWITCH AND SOCKET LOCATION TO BE DOUBLE CONFIRMED BY M&E ENGINEER AND KITCHEN SPECIALIST.
OUR PROPOSED LOCATIONS ARE SHOWN IN THE KITCHEN SPACE DETAIL DRAWINGS.



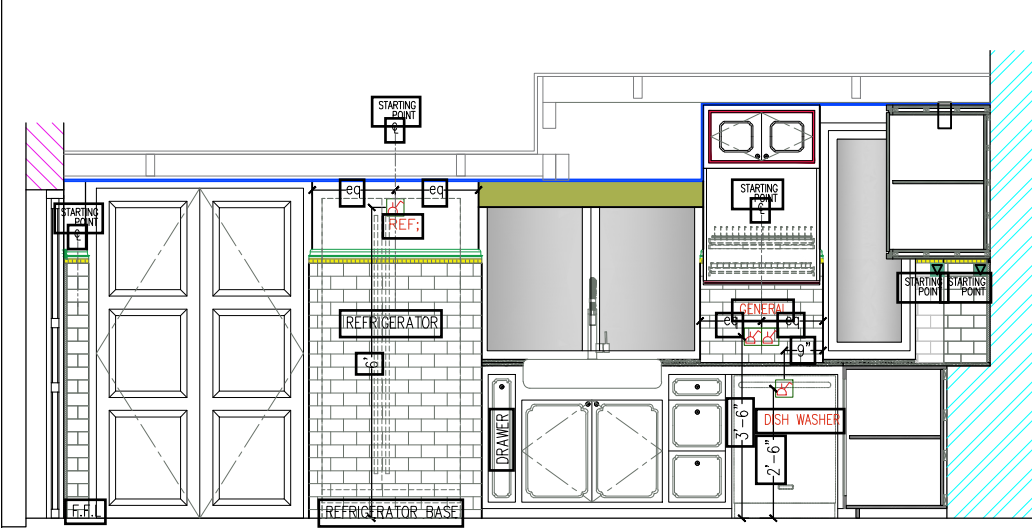
PLAN
(SHOWING WALLING, FLOOR FINISHED, FURNITURE LAYOUT & POWER SOCKET)



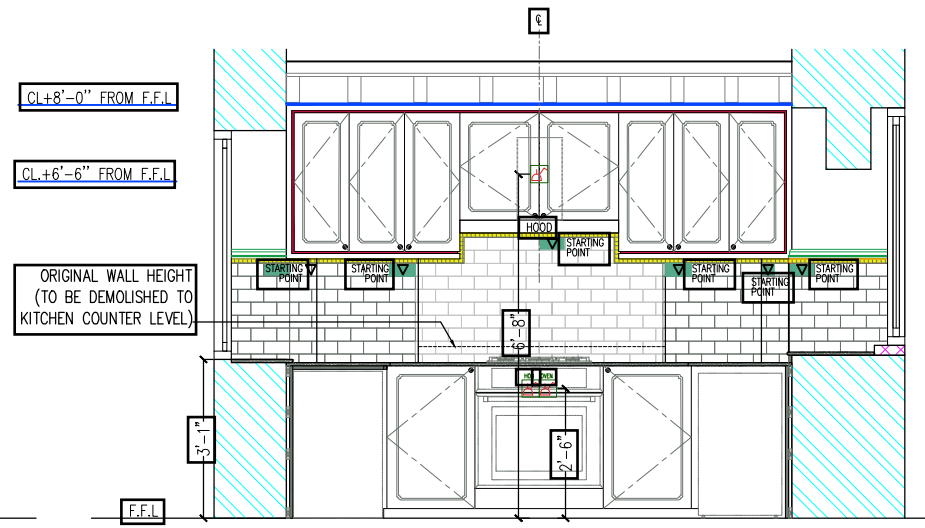
PLAN
(SHOWING CEILING & LIGHTING)

NOTE: ON SITE MEASUREMENT SHOULD BE MADE.

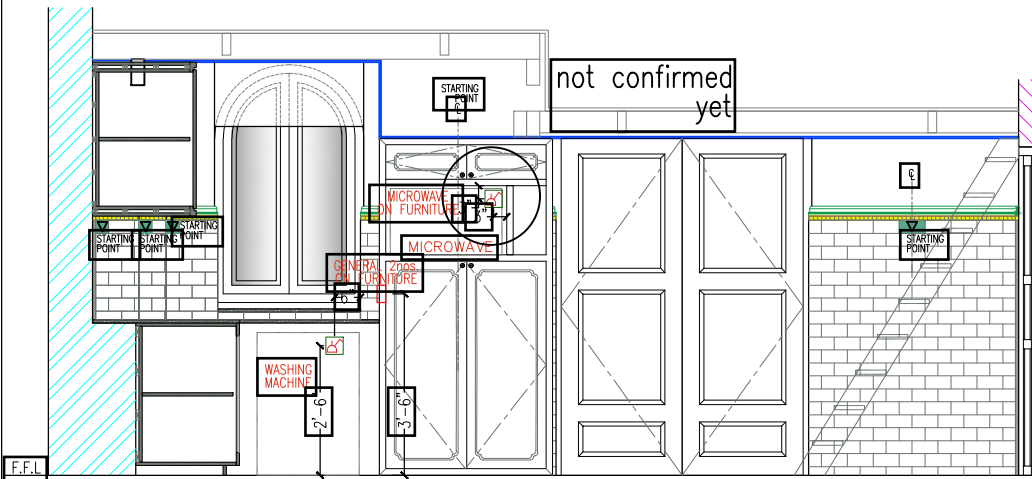
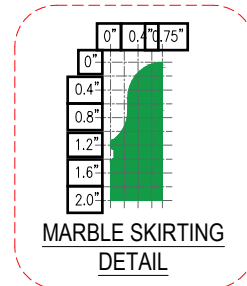
EXISTING BRICK WALL	TILE-1 (1'x1' MARBLE TILE TO SELECTION)	TILE-3 (MARBLE TILE TO SELECTION)	MULTI SWITCH SOCKET	4 GANG SWITCH	CEILING LINE
NEW DRY WALL	TILE-2 (1'x1' MARBLE TILE TO SELECTION)	DOWN LIGHT	2 WAY 3 GANG SWITCH	MARBLE SKIRTING LINE	
LIGHT WEIGHT CONCRETE BLOCK WALLING					



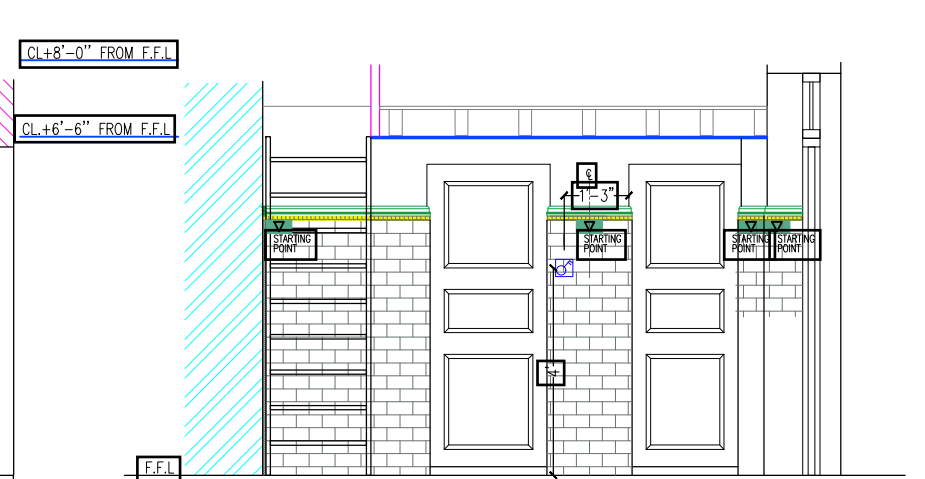
ELEVATION-1



ELEVATION-2



ELEVATION-3



ELEVATION-4

NOTE; FLOOR LEVEL TO BE CHECKED WITH ICECO. SITE MEASUREMENT SHOULD BE MADE.

- EXISTING BRICK WALL
- NEW DRY WALL
- LIGHT WEIGHT CONCRETE BLOCK WALLING
- (3"x6") WALL TILE TO SELECTION
- (1"x1") MOSAIC TILE TO SELECTION
- MULTI SWITCH SOCKET
- 1 GANG SWITCH
- CEILING LINE
- MARBLE SKIRTING LINE

